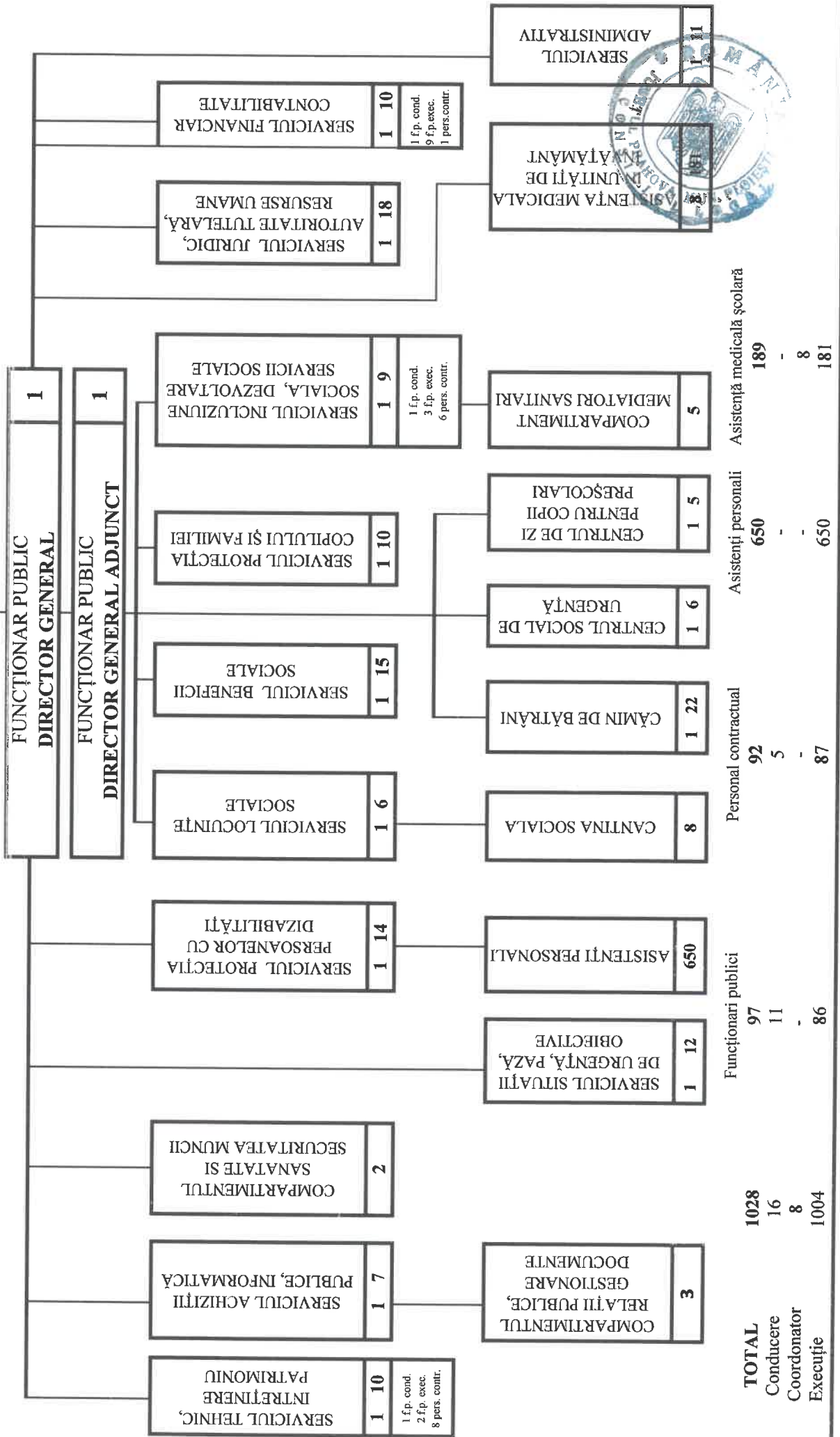


CONSILIUL LOCAL AL MUNICIPIULUI PLOIEȘTI

Anexa 1 la HCL nr. 833 / 2026

ADMINISTRAȚIA SERVICIILOR SOCIALE COMUNITARE



ADMINISTRATIA SERVICIILOR SOCIALE COMUNITARE PLOIESTI

Anexa nr.2 la HCL nr.

253/2025

STAT DE FUNCȚII -

| Nr. crt. | STRUCTURA | FUNCTIE DE DEMNITATE PUBLICĂ | Funcție publică | | Clasa | Gradul profesional | Nivelul studiilor | Funcția contractuală | | Grad/Treapta profesională | Nivelul studiilor |
|---|-----------|------------------------------|-----------------------|-----------------------------|-------|--------------------|-------------------|----------------------|-------------|---------------------------|---------------------------|
| | | | de conducere ** | de execuție | | | | de conducere | de execuție | | |
| CONDUCERE | | | | | | | | | | | |
| 1 | | | director general | | | II | S | | | | |
| 2 | | | director general adj. | | | II | S | | | | |
| SERVICIUL ACHIZIȚII PUBLICE, INFORMATICĂ | | | | | | | | | | | |
| 3 | | | sef serviciu | | | II | S | | | | |
| 4 | | | | consilier achizitii publice | I | superior | S | | | | |
| 5 | | | | consilier achizitii publice | I | superior | S | | | | |
| 6 | | | | consilier achizitii publice | I | superior | S | | | | |
| 7 | | | | consilier achizitii publice | I | superior | S | | | | |
| 8 | | | | consilier achizitii publice | I | asistent | S | | | | |
| 9 | | | | consilier | I | superior | S | | | | |
| 10 | | | | consilier | I | superior | S | | | | |
| COMPARTIMENT RELAȚII PUBLICE, GESTIONARE DOCUMENTE | | | | | | | | | | | |
| 11 | | | | | | | | | | | inspector de specialitate |



| Nr. crt. | STRUCTURA | FUNCTIE DE DEMNITATE PUBLICA | Funcție publică | | Clasa | Gradul profesional | Nivelul studiilor | Funcția contractuală | | Grad/Treapta profesională | Nivelul studiilor |
|----------|-----------|------------------------------|-----------------|-------------|-------|--------------------|-------------------|----------------------|---------------------------|---------------------------|-------------------|
| | | | de conducere ** | de execuție | | | | de conducere | de execuție | | |
| 12 | | | | | | | | | inspector de specialitate | IA | S |
| 13 | | | | | | | | | referent | IA | M |

SERVICIUL LOCUINTE SOCIALE

| | | | | | | | | | | | |
|----|--|--|--------------|--|-----|-----------|---|--|--|--|--|
| 14 | | | sef serviciu | | | II | S | | | | |
| 15 | | | consilier | | I | superior | S | | | | |
| 16 | | | consilier | | I | superior | S | | | | |
| 17 | | | consilier | | I | superior | S | | | | |
| 18 | | | consilier | | I | superior | S | | | | |
| 19 | | | consilier | | I | principal | S | | | | |
| 20 | | | referent | | III | superior | M | | | | |

CANTINA SOCIALĂ

| | | | | | | | | | | | |
|----|--|--|--|--|--|--|--|--|---------------------------|----|---|
| 21 | | | | | | | | | inspector de specialitate | IA | S |
| 22 | | | | | | | | | inspector de specialitate | IA | S |
| 23 | | | | | | | | | magaziner | | |
| 24 | | | | | | | | | bucatar | | |
| 25 | | | | | | | | | bucatar | | |
| 26 | | | | | | | | | bucatar | | |
| 27 | | | | | | | | | bucatar | | |
| 28 | | | | | | | | | muncitor necalificat | I | |

SERVICIUL BENEFICIIL SOCIALE

| | | | | | | | | | | | |
|----|--|--|--------------|--|---|----------|---|--|--|--|--|
| 29 | | | sef serviciu | | | II | S | | | | |
| 30 | | | consilier | | I | superior | S | | | | |
| 31 | | | consilier | | I | superior | S | | | | |
| 32 | | | consilier | | I | superior | S | | | | |
| 33 | | | consilier | | I | superior | S | | | | |
| 34 | | | consilier | | I | superior | S | | | | |



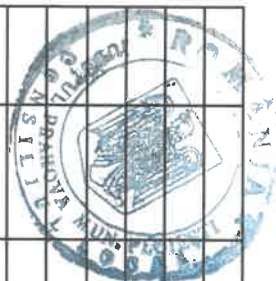
| Nr. crt. | STRUCTURA | FUNCTIE DE DEMNITATE PUBLICA | Funcție publică | | Clasa | Gradul profesional | Nivelul studiilor | Funcția contractuală | | Grad/Treapta profesională | Nivelul studiilor |
|----------|-----------|------------------------------|-----------------|-------------|-------|--------------------|-------------------|----------------------|-------------|---------------------------|-------------------|
| | | | de conducere ** | de execuție | | | | de conducere | de execuție | | |
| 35 | | | | consilier | I | superior | S | | | | |
| 36 | | | | consilier | I | superior | S | | | | |
| 37 | | | | consilier | I | superior | S | | | | |
| 38 | | | | consilier | I | superior | S | | | | |
| 39 | | | | consilier | I | superior | S | | | | |
| 40 | | | | consilier | I | superior | S | | | | |
| 41 | | | | consilier | I | superior | S | | | | |
| 42 | | | | consilier | I | superior | S | | | | |
| 43 | | | | consilier | I | superior | S | | | | |
| 44 | | | | consilier | I | superior | S | | | | |

COMPARTIMENTUL SANATATE SI SECURITATEA MUNCII

| | | | | | | | | | | | |
|----|--|--|--|-----------|---|----------|---|--|--|--|--|
| 45 | | | | consilier | I | superior | S | | | | |
| 46 | | | | consilier | I | superior | S | | | | |

SERVICIUL JURIDIC, AUTORITATE TUTELARĂ, RESURSE UMANE

| | | | | | | | | | | | |
|----|--|--|-------------------|--|---|----------|---|--|--|--|--|
| 47 | | | sef serviciu | | | II | S | | | | |
| 48 | | | consilier juridic | | I | superior | S | | | | |
| 49 | | | consilier | | I | superior | S | | | | |
| 50 | | | consilier | | I | superior | S | | | | |
| 51 | | | consilier | | I | superior | S | | | | |
| 52 | | | consilier | | I | superior | S | | | | |
| 53 | | | consilier | | I | superior | S | | | | |
| 54 | | | consilier | | I | superior | S | | | | |
| 55 | | | consilier | | I | superior | S | | | | |
| 56 | | | consilier | | I | superior | S | | | | |
| 57 | | | consilier | | I | superior | S | | | | |
| 58 | | | consilier | | I | superior | S | | | | |



| Nr. crt. | STRUCTURA | FUNCTIE DE DEMNITATE PUBLICA | Funcție publică | | Clasa | Gradul Profesional | Nivelul studiilor | Funcția contractuală | | Grad/Treapta profesională | Nivelul studiilor |
|----------|-----------|------------------------------|-----------------|-------------|-------|--------------------|-------------------|----------------------|-------------|---------------------------|-------------------|
| | | | de conducere ** | de execuție | | | | de conducere | de execuție | | |
| 59 | | | | consilier | I | superior | S | | | | |
| 60 | | | | consilier | I | superior | S | | | | |
| 61 | | | | consilier | I | superior | S | | | | |
| 62 | | | | consilier | I | superior | S | | | | |
| 63 | | | | consilier | I | superior | S | | | | |
| 64 | | | | consilier | I | superior | S | | | | |
| 65 | | | | consilier | I | principal | S | | | | |

SERVICIUL PROTECȚIA PERSOANELOR CU DIZABILITĂȚI

| | | | | | | | | | | | |
|----|--|--|--------------|--|---|-----------|---|--|--|--|--|
| 66 | | | sef serviciu | | | II | S | | | | |
| 67 | | | consilier | | I | superior | S | | | | |
| 68 | | | consilier | | I | superior | S | | | | |
| 69 | | | consilier | | I | superior | S | | | | |
| 70 | | | consilier | | I | superior | S | | | | |
| 71 | | | consilier | | I | superior | S | | | | |
| 72 | | | consilier | | I | superior | S | | | | |
| 73 | | | consilier | | I | superior | S | | | | |
| 74 | | | consilier | | I | superior | S | | | | |
| 75 | | | consilier | | I | superior | S | | | | |
| 76 | | | consilier | | I | superior | S | | | | |
| 77 | | | consilier | | I | superior | S | | | | |
| 78 | | | consilier | | I | superior | S | | | | |
| 79 | | | consilier | | I | superior | S | | | | |
| 80 | | | consilier | | I | principal | S | | | | |

SERVICIUL FINANCIAR CONTABILITATE

| | | | | | | | | | | | |
|----|--|--|--------------|--|---|----------|---|--|--|--|--|
| 81 | | | sef serviciu | | | II | S | | | | |
| 82 | | | consilier | | I | superior | S | | | | |



| Nr. crt. | STRUCTURA | FUNCTIE DE DEMNITATE PUBLICA | Funcție publică | | Clasa | Gradul profesional | Nivelul studii | Funcția contractuală | | Grad/Treapta profesională | Nivelul studii |
|----------|-----------|------------------------------|-----------------|-------------|-------|--------------------|----------------|----------------------|------------------|---------------------------|----------------|
| | | | de conducere ** | de execuție | | | | de conducere | de execuție | | |
| 83 | | | | consilier | I | superior | S | | | | |
| 84 | | | | consilier | I | superior | S | | | | |
| 85 | | | | consilier | I | superior | S | | | | |
| 86 | | | | consilier | I | superior | S | | | | |
| 87 | | | | consilier | I | superior | S | | | | |
| 88 | | | | consilier | I | principal | S | | | | |
| 89 | | | | consilier | I | superior | S | | | | |
| 90 | | | | consilier | I | superior | S | | | | |
| 91 | | | | | | | | | inspector casier | IA | S |

SERVICIUL INCLUZIUNE SOCIALĂ, DEZVOLTARE SERVICII SOCIALE

| | | | | | | | | | | | |
|-----|--|--|--------------|--|---|----------|---|--|---------------------------|----|---|
| 92 | | | sef serviciu | | | II | S | | | | |
| 93 | | | consilier | | I | superior | S | | | | |
| 94 | | | consilier | | I | superior | S | | | | |
| 95 | | | consilier | | I | superior | S | | | | |
| 96 | | | | | | | | | inspector de specialitate | IA | S |
| 97 | | | | | | | | | inspector de specialitate | IA | S |
| 98 | | | | | | | | | inspector de specialitate | IA | S |
| 99 | | | | | | | | | inspector de specialitate | IA | S |
| 100 | | | | | | | | | inspector de specialitate | IA | S |
| 101 | | | | | | | | | inspector de specialitate | IA | S |

COMPARTIMENT MEDIATORI SANITARI

| | | | | | | | | | | | |
|-----|--|--|--|--|--|--|--|--|--|--|------------------|
| 102 | | | | | | | | | | | mediator sanitar |
| 103 | | | | | | | | | | | mediator sanitar |
| 104 | | | | | | | | | | | mediator sanitar |



| Nr. crt. | STRUCTURA | FUNCTIE DE DEMNITATE PUBLICA | Funcție publică | | Clasa | Gradul profesional | Nivelul studiiilor | Funcția contractuală | | Grad/Treapta profesională | Nivelul studiiilor |
|----------|-----------|------------------------------|-----------------|-------------|-------|--------------------|--------------------|----------------------|--------------------------------------|---------------------------|--------------------|
| | | | de conducere ** | de execuție | | | | de conducere | de execuție | | |
| 105 | | | | | | | | | | principal | M |
| 106 | | | | | | | | | mediator sanitar mediator sanitar | principal | M |

SERVICIUL PROTECȚIA COPILULUI ȘI FAMILIEI

| | | | | | | | | | | | |
|-----|--|--|--------------|--|---|----------|---|--|--|--|--|
| 107 | | | sef serviciu | | | II | S | | | | |
| 108 | | | consilier | | I | superior | S | | | | |
| 109 | | | consilier | | I | superior | S | | | | |
| 110 | | | consilier | | I | superior | S | | | | |
| 111 | | | consilier | | I | superior | S | | | | |
| 112 | | | consilier | | I | superior | S | | | | |
| 113 | | | consilier | | I | superior | S | | | | |
| 114 | | | consilier | | I | superior | S | | | | |
| 115 | | | consilier | | I | superior | S | | | | |
| 116 | | | consilier | | I | superior | S | | | | |
| 117 | | | consilier | | I | superior | S | | | | |

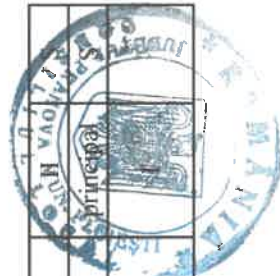
SERVICIUL TEHNIC, ÎNȚEȚINERE PATRIMONIU

| | | | | | | | | | | | |
|-----|--|--|--------------|--|---|----------|---|--|-----------------|---|--|
| 118 | | | sef serviciu | | | II | S | | | | |
| 119 | | | consilier | | I | superior | S | | | | |
| 120 | | | consilier | | I | superior | S | | | | |
| 121 | | | | | | | | | munc.calificat | I | |
| 122 | | | | | | | | | munc.calificat | I | |
| 123 | | | | | | | | | munc.calificat | I | |
| 124 | | | | | | | | | munc. calificat | I | |
| 125 | | | | | | | | | munc.calificat | I | |
| 126 | | | | | | | | | munc.calificat | | |
| 127 | | | | | | | | | munc.calificat | | |
| 128 | | | | | | | | | munc.calificat | | |

SERVICIUL ADMINISTRATIV



| Nr. crt. | STRUCTURA | FUNCTIE DE DEMNITATE PUBLICA | Funcție publică | | Clasa | Gradul profesional | Nivelul studiilor | Funcția contractuală | | Grad/Treapta profesională | Nivelul studiilor |
|----------------------------------|-----------|------------------------------|-----------------|-------------|-------|--------------------|-------------------|---------------------------|-------------|---------------------------|-------------------|
| | | | de conducere ** | de execuție | | | | de conducere | de execuție | | |
| 129 | | | | | | | | sef serviciu | | II | S |
| 130 | | | | | | | | inspector de specialitate | | IA | S |
| 131 | | | | | | | | inspector de specialitate | | IA | S |
| 132 | | | | | | | | inspector de specialitate | | IA | S |
| 133 | | | | | | | | referent | | IA | M |
| 134 | | | | | | | | sofer | | I | |
| 135 | | | | | | | | sofer | | I | |
| 136 | | | | | | | | sofer | | I | |
| 137 | | | | | | | | magaziner | | | |
| 138 | | | | | | | | muncitor necalificat | | I | |
| 139 | | | | | | | | muncitor necalificat | | I | |
| 140 | | | | | | | | muncitor necalificat | | I | |
| CENTRUL DE ZI COPII | | | | | | | | | | | |
| 141 | | | | | | | | sef centru | | II | S |
| 142 | | | | | | | | psiholog | | princip. | S |
| 143 | | | | | | | | psiholog | | princip. | S |
| 144 | | | | | | | | educator | | princip. | S |
| 145 | | | | | | | | educator | | princip. | S |
| 146 | | | | | | | | muncitor necalificat | | I | |
| CENTRUL SOCIAL DE URGENȚĂ | | | | | | | | | | | |
| 147 | | | | | | | | sef centru | | | |
| 148 | | | | | | | | asistent social | | | |
| 149 | | | | | | | | muncitor necalificat | | | |



| Nr. crt. | STRUCTURA | FUNCTIE DE DEMNITATE PUBLICA | Funcție publică | | Clasa | Gradul profesional | Nivelul studiilor | Funcția contractuală | | Grad/Treaptă profesională | Nivelul studiilor |
|----------|-----------|------------------------------|-----------------|-------------|-------|--------------------|-------------------|----------------------|----------------------|---------------------------|-------------------|
| | | | de conducere ** | de execuție | | | | de conducere | de execuție | | |
| 150 | | | | | | | | | muncitor necalificat | I | |
| 151 | | | | | | | | | muncitor necalificat | I | |
| 152 | | | | | | | | | muncitor necalificat | I | |
| 153 | | | | | | | | | muncitor necalificat | I | |

CĂMINUL DE BĂTRÂNI

| | | | | | | | | | | | |
|-----|--|--|--|--|--|--|--|--|------------------|-----------|----|
| 154 | | | | | | | | | sef centru | II | S |
| 155 | | | | | | | | | asistent social | principal | S |
| 156 | | | | | | | | | asistent social | principal | S |
| 157 | | | | | | | | | magaziner | | |
| 158 | | | | | | | | | asistent medical | principal | PL |
| 159 | | | | | | | | | asistent medical | principal | PL |
| 160 | | | | | | | | | asistent medical | principal | PL |
| 161 | | | | | | | | | asistent medical | principal | PL |
| 162 | | | | | | | | | asistent medical | principal | PL |
| 163 | | | | | | | | | infirmiera | | |
| 164 | | | | | | | | | infirmiera | | |
| 165 | | | | | | | | | infirmiera | | |
| 166 | | | | | | | | | infirmiera | | |
| 167 | | | | | | | | | infirmiera | | |
| 168 | | | | | | | | | infirmiera | | |
| 169 | | | | | | | | | infirmiera | | |
| 170 | | | | | | | | | infirmiera | | |
| 171 | | | | | | | | | infirmiera | | |
| 172 | | | | | | | | | bucatar | | |
| 173 | | | | | | | | | bucatar | | |





anexa nr. 6

la HCL nr. 253/2025

STAT DE FUNCȚII

ASISTENȚA MEDICALĂ ÎN UNITĂȚI DE ÎNVĂȚĂMÂNT

| nr.crt | functia | | nivel studii | grad |
|--------|----------------------------|----------------------|--------------|------------|
| 1 | medic coordonator | personal contractual | S | |
| 2 | medic coordonator | personal contractual | S | |
| 3 | medic coordonator | personal contractual | S | |
| 4 | medic coordonator | personal contractual | S | |
| 5 | asist. medical coordonator | personal contractual | S/SSD/PL | principal |
| 6 | asist. medical coordonator | personal contractual | S/SSD/PL | principal |
| 7 | asist. medical coordonator | personal contractual | S/SSD/PL | principal |
| 8 | asist. medical coordonator | personal contractual | S/SSD/PL | principal |
| 9 | medic primar | personal contractual | S | primar |
| 10 | medic primar | personal contractual | S | primar |
| 11 | medic primar | personal contractual | S | primar |
| 12 | medic specialist | personal contractual | S | specialist |
| 13 | medic specialist | personal contractual | S | specialist |
| 14 | medic specialist | personal contractual | S | specialist |
| 15 | medic specialist | personal contractual | S | specialist |
| 16 | medic specialist | personal contractual | S | specialist |
| 17 | medic specialist | personal contractual | S | specialist |
| 18 | medic specialist | personal contractual | S | specialist |
| 19 | medic specialist | personal contractual | S | specialist |
| 20 | medic specialist | personal contractual | S | specialist |
| 21 | medic specialist | personal contractual | S | specialist |
| 22 | medic | personal contractual | S | |
| 23 | medic | personal contractual | S | |
| 24 | medic | personal contractual | S | |
| 25 | medic | personal contractual | S | |
| 26 | medic | personal contractual | S | |
| 27 | medic dentist primar | personal contractual | S | primar |
| 28 | medic dentist primar | personal contractual | S | primar |
| 29 | medic dentist primar | personal contractual | S | primar |
| 30 | medic dentist primar | personal contractual | S | primar |
| 31 | medic dentist primar | personal contractual | S | primar |
| 32 | medic dentist specialist | personal contractual | S | specialist |
| 33 | medic dentist specialist | personal contractual | S | specialist |
| 34 | medic dentist | personal contractual | S | |
| 35 | medic dentist | personal contractual | S | |
| 36 | medic dentist | personal contractual | S | |
| 37 | medic dentist | personal contractual | S | |
| 38 | medic dentist | personal contractual | S | |
| 39 | medic dentist | personal contractual | S | |



| | | | | |
|-----|------------------|----------------------|----|-----------|
| 126 | asistent medical | personal contractual | PL | principal |
| 127 | asistent medical | personal contractual | PL | principal |
| 128 | asistent medical | personal contractual | PL | principal |
| 129 | asistent medical | personal contractual | PL | principal |
| 130 | asistent medical | personal contractual | PL | principal |
| 131 | asistent medical | personal contractual | PL | principal |
| 132 | asistent medical | personal contractual | PL | principal |
| 133 | asistent medical | personal contractual | PL | principal |
| 134 | asistent medical | personal contractual | PL | principal |
| 135 | asistent medical | personal contractual | PL | principal |
| 136 | asistent medical | personal contractual | PL | principal |
| 137 | asistent medical | personal contractual | PL | principal |
| 138 | asistent medical | personal contractual | PL | principal |
| 139 | asistent medical | personal contractual | PL | principal |
| 140 | asistent medical | personal contractual | PL | principal |
| 141 | asistent medical | personal contractual | PL | principal |
| 142 | asistent medical | personal contractual | PL | principal |
| 143 | asistent medical | personal contractual | PL | principal |
| 144 | asistent medical | personal contractual | PL | |
| 145 | asistent medical | personal contractual | PL | |
| 146 | asistent medical | personal contractual | PL | |
| 147 | asistent medical | personal contractual | PL | |
| 148 | asistent medical | personal contractual | PL | |
| 149 | asistent medical | personal contractual | PL | |
| 150 | asistent medical | personal contractual | PL | |
| 151 | asistent medical | personal contractual | PL | |
| 152 | asistent medical | personal contractual | PL | |
| 153 | asistent medical | personal contractual | PL | |
| 154 | asistent medical | personal contractual | PL | |
| 155 | asistent medical | personal contractual | PL | |
| 156 | asistent medical | personal contractual | PL | |
| 157 | asistent medical | personal contractual | PL | |
| 158 | asistent medical | personal contractual | PL | |
| 159 | asistent medical | personal contractual | PL | |
| 160 | asistent medical | personal contractual | PL | |
| 161 | asistent medical | personal contractual | PL | |
| 162 | asistent medical | personal contractual | PL | |
| 163 | asistent medical | personal contractual | PL | |
| 164 | asistent medical | personal contractual | PL | |
| 165 | asistent medical | personal contractual | PL | |
| 166 | asistent medical | personal contractual | PL | |
| 167 | asistent medical | personal contractual | PL | |
| 168 | asistent medical | personal contractual | PL | |



| | | | | |
|-----|----------------------------|----------------------|----|-----------|
| 169 | asistent medical | personal contractual | PL | |
| 170 | asistent medical | personal contractual | PL | |
| 171 | asistent medical | personal contractual | PL | |
| 172 | asistent medical | personal contractual | PL | principal |
| 173 | asistent medical | personal contractual | PL | principal |
| 174 | asistent medical | personal contractual | PL | debutant |
| 175 | asistent medical | personal contractual | PL | |
| 176 | asistent medical | personal contractual | PL | |
| 177 | asistent medical 1/2 norma | personal contractual | PL | principal |
| 178 | asistent medical 1/2 norma | personal contractual | PL | principal |
| 179 | asistent medical 1/2 norma | personal contractual | PL | principal |
| 180 | asistent medical 1/2 norma | personal contractual | PL | principal |
| 181 | asistent medical 1/2 norma | personal contractual | PL | principal |
| 182 | asistent medical 1/2 norma | personal contractual | PL | |
| 183 | asistent medical 1/2 norma | personal contractual | PL | |
| 184 | asistent medical 1/2 norma | personal contractual | PL | |
| 185 | asistent medical 1/2 norma | personal contractual | PL | |
| 186 | asistent medical 1/2 norma | personal contractual | PL | |
| 187 | asistent medical 1/2 norma | personal contractual | PL | |
| 188 | asistent medical 1/2 norma | personal contractual | PL | |
| 189 | asistent medical | personal contractual | PL | principal |

STAT DE FUNCTII

anexa nr.4 la HCL nr.



ASISTENTI PERSONALI

| nr.crt | denumirea functiei | functia | nivel studii |
|--------|--------------------|----------------------|--------------|
| 1 | asistent personal | personal contractual | M, G |
| 2 | asistent personal | personal contractual | M, G |
| 3 | asistent personal | personal contractual | M, G |
| 4 | asistent personal | personal contractual | M, G |
| 5 | asistent personal | personal contractual | M, G |
| 6 | asistent personal | personal contractual | M, G |
| 7 | asistent personal | personal contractual | M, G |
| 8 | asistent personal | personal contractual | M, G |
| 9 | asistent personal | personal contractual | M, G |
| 10 | asistent personal | personal contractual | M, G |
| 11 | asistent personal | personal contractual | M, G |
| 12 | asistent personal | personal contractual | M, G |
| 13 | asistent personal | personal contractual | M, G |
| 14 | asistent personal | personal contractual | M, G |
| 15 | asistent personal | personal contractual | M, G |
| 16 | asistent personal | personal contractual | M, G |
| 17 | asistent personal | personal contractual | M, G |
| 18 | asistent personal | personal contractual | M, G |
| 19 | asistent personal | personal contractual | M, G |
| 20 | asistent personal | personal contractual | M, G |
| 21 | asistent personal | personal contractual | M, G |
| 22 | asistent personal | personal contractual | M, G |
| 23 | asistent personal | personal contractual | M, G |
| 24 | asistent personal | personal contractual | M, G |
| 25 | asistent personal | personal contractual | M, G |
| 26 | asistent personal | personal contractual | M, G |
| 27 | asistent personal | personal contractual | M, G |
| 28 | asistent personal | personal contractual | M, G |
| 29 | asistent personal | personal contractual | M, G |
| 30 | asistent personal | personal contractual | M, G |
| 31 | asistent personal | personal contractual | M, G |
| 32 | asistent personal | personal contractual | M, G |
| 33 | asistent personal | personal contractual | M, G |
| 34 | asistent personal | personal contractual | M, G |
| 35 | asistent personal | personal contractual | M, G |
| 36 | asistent personal | personal contractual | M, G |
| 37 | asistent personal | personal contractual | M, G |
| 38 | asistent personal | personal contractual | M, G |
| 39 | asistent personal | personal contractual | M, G |
| 40 | asistent personal | personal contractual | M, G |
| 41 | asistent personal | personal contractual | M, G |
| 42 | asistent personal | personal contractual | M, G |
| 43 | asistent personal | personal contractual | M, G |
| 44 | asistent personal | personal contractual | M, G |
| 45 | asistent personal | personal contractual | M, G |
| 46 | asistent personal | personal contractual | M, G |
| 47 | asistent personal | personal contractual | M, G |
| 48 | asistent personal | personal contractual | M, G |

| | | | |
|-----|-------------------|----------------------|------|
| 632 | asistent personal | personal contractual | M, G |
| 633 | asistent personal | personal contractual | M, G |
| 634 | asistent personal | personal contractual | M, G |
| 635 | asistent personal | personal contractual | M, G |
| 636 | asistent personal | personal contractual | M, G |
| 637 | asistent personal | personal contractual | M, G |
| 638 | asistent personal | personal contractual | M, G |
| 639 | asistent personal | personal contractual | M, G |
| 640 | asistent personal | personal contractual | M, G |
| 641 | asistent personal | personal contractual | M, G |
| 642 | asistent personal | personal contractual | M, G |
| 643 | asistent personal | personal contractual | M, G |
| 644 | asistent personal | personal contractual | M, G |
| 645 | asistent personal | personal contractual | M, G |
| 646 | asistent personal | personal contractual | M, G |
| 647 | asistent personal | personal contractual | M, G |
| 648 | asistent personal | personal contractual | M, G |
| 649 | asistent personal | personal contractual | M, G |
| 650 | asistent personal | personal contractual | M, G |

