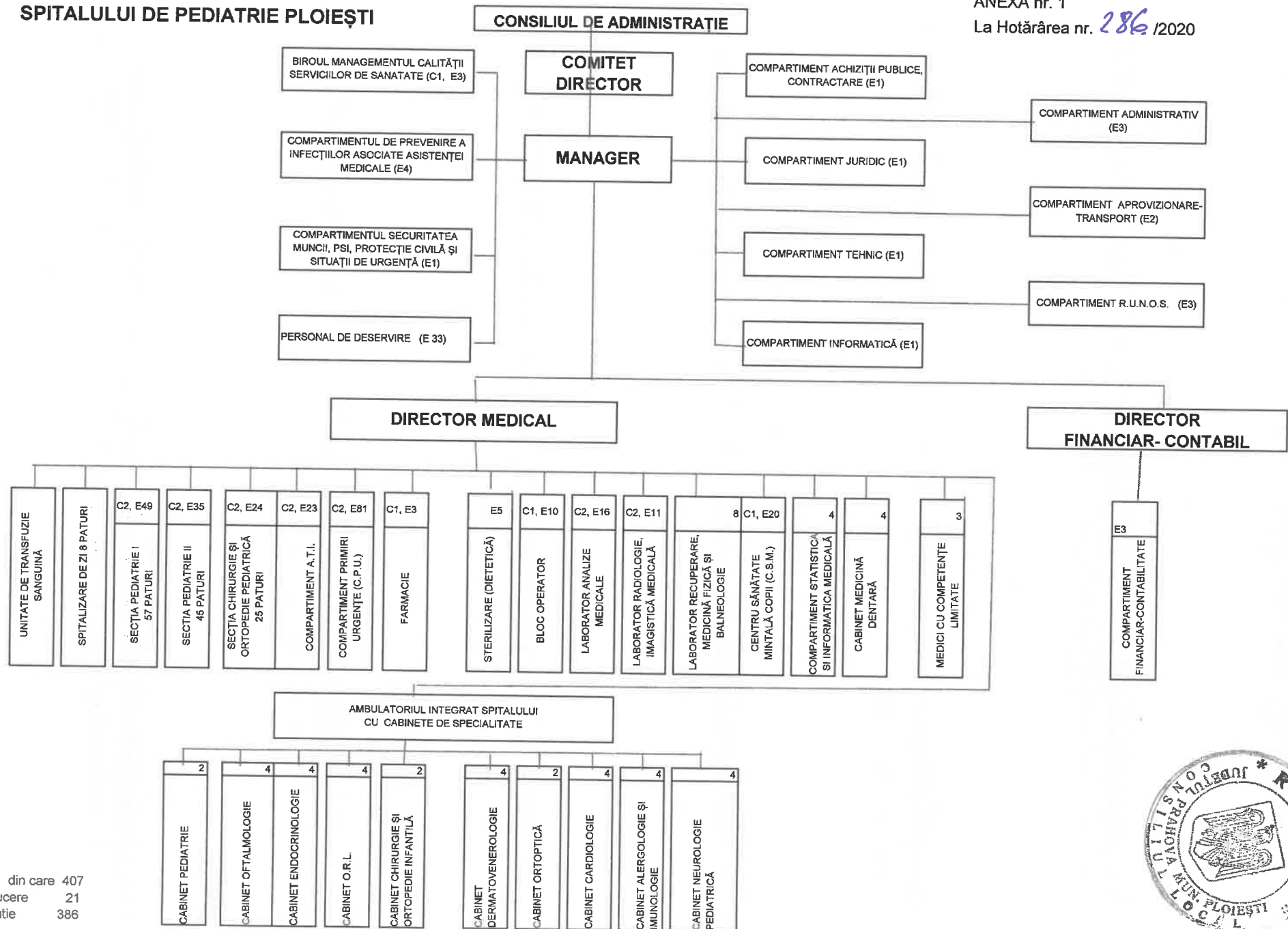


**ORGANIGRAMA
SPITALULUI DE PEDIATRIE PLOIEȘTI**

ANEXA nr. 1
La Hotărârea nr. 286 /2020



Total posturi, din care 407
posturi conducere 21
posturi executie 386



STAT DE FUNCȚII



NR. CRT.	Nr. crt.	Funcția contractuală		Treapta profesională/grad	Nivelul studiilor
		de conducere	de execuție		
Comitet director					
1		Manager			
2		Director medical			
3		Director financiar - contabil			
I. SECȚIA PEDIATRIE I- AMBULATOR INTEGRAT Nr. Paturi = 57					
Personal medical superior					
4	1	medic primar - sef sectie			S
5	1		medic primar		S
6	2		medic primar		S
7	3		medic primar		S
8	4		medic primar		S
9	5		medic primar		S
10	6		medic primar		S
11	7		medic specialist		S
Personal mediu sanitar					
12	2	asistent medical principal sef			PL
13	8		asistent medical principal		PL
14	9		asistent medical principal		PL
15	10		asistent medical principal		PL
16	11		asistent medical principal		PL
17	12		asistent medical principal		PL
18	13		asistent medical principal		PL
19	14		asistent medical principal		PL
20	15		asistent medical principal		PL
21	16		asistent medical principal		PL
22	17		asistent medical principal		PL
23	18		asistent medical principal		PL
24	19		asistent medical principal		PL
25	20		asistent medical principal		PL
26	21		asistent medical		PL
27	22		asistent medical		PL
28	23		asistent medical		PL
29	24		asistent medical		PL
30	25		asistent medical		PL
31	26		asistent medical		PL
32	27		asistent medical		PL
33	28		asistent medical		PL
34	29		asistent medical		PL
35	30		asistent medical debutant		PL
36	31		sora medicala principala		M
Personal auxiliar= infirmiere					
37	32		infirmiera		G
38	33		infirmiera		G
39	34		infirmiera		G
40	35		infirmiera		G
41	36		infirmiera		G
42	37		infirmiera		G
43	38		infirmiera		G
44	39		infirmiera		G
45	40		infirmiera		G
46	41		infirmiera		G
47	42		infirmiera		G
48	43		infirmiera		G
49	44		infirmiera		G
Personal auxiliar= ingrijitori curatenie					
50	45		ingrijitor		G
51	46		ingrijitor		G

NR. CRT.	Nr. crt.	Funcția contractuală		Treapta profesională/grad	Nivelul studiilor
		de conducere	de executie		
52	47		îngrijitor		G
53	48		îngrijitor		G
54	49		îngrijitor		G
II. SECTIA PEDIATRIE II- AMBULATOR INTEGRAT Nr. Paturi = 45					
Personal medical superior					
55	1	medic primar - sef sectie			S
56	1		medic primar		S
57	2		medic primar		S
58	3		medic primar		S
59	4		medic primar		S
60	5		medic rezident		S
61	6		medic rezident		S
Personal mediu sanitar					
62	2	asistent medical principal sef			PL
63	7		asistent medical principal		PL
64	8		asistent medical principal		PL
65	9		asistent medical principal		PL
66	10		asistent medical principal		PL
67	11		asistent medical principal		PL
68	12		asistent medical principal		PL
69	13		asistent medical principal		PL
70	14		asistent medical principal		PL
71	15		asistent medical principal		PL
72	16		asistent medical principal		PL
73	17		asistent medical		PL
74	18		asistent medical		PL
75	19		asistent medical debutant		PL
76	20		asistent medical debutant		PL
77	21		asistent medical debutant		PL
78	22		asistent medical debutant		PL
Personal auxiliar= infirmiere					
79	23		infirmiera		G
80	24		infirmiera		G
81	25		infirmiera		G
82	26		infirmiera		G
83	27		infirmiera		G
84	28		infirmiera		G
85	29		infirmiera		G
86	30		infirmiera		G
87	31		infirmiera		G
Personal auxiliar= ingrijitori curatenie					
88	32		îngrijitor		G
89	33		îngrijitor		G
90	34		îngrijitor		G
91	35		îngrijitor		G
III. SECTIA CHIRURGIE SI ORTOPEDIE PEDIATRICA + AMBULATOR INTEGRAT Nr. Paturi = 25					
Personal medical superior					
92	1	medic primar - sef sectie			S
93	1		medic primar		S
94	2		medic primar		S
95	3		medic primar		S
96	4		medic primar		S
97	5		medic specialist		S
98	6		medic rezident		S
Personal mediu sanitar					
99	2	asistent medical principal sef			PL
100	7		asistent medical principal		PL
101	8		asistent medical principal		PL
102	9		asistent medical principal		PL
103	10		asistent medical principal		PL
104	11		asistent medical principal		PL
105	12		asistent medical principal		PL
106	13		asistent medical principal		PL

NR. CRT.	Nr. crt.	Funcția contractuală		Treapta profesională/grad	Nivelul studiilor
		de conducere	de executie		
107	14		asistent medical		PL
108	15		asistent medical		PL
Personal auxiliar= infirmiere					
109	16		infirmiera		G
110	17		infirmiera		G
111	18		infirmiera		G
112	19		infirmiera		G
113	20		infirmiera		G
Personal auxiliar= ingrijitori curatenie					
114	21		îngrijitor		G
115	22		îngrijitor		G
116	23		îngrijitor		G
117	24		îngrijitor		G
IV. COMPARTIMENT ATI Nr. Paturi = 8					
Personal medical superior					
118	1	medic primar - sef sectie			S
119	1		medic primar		S
120	2		medic specialist		S
121	3		medic specialist		S
122	4		medic specialist		S
123	5		medic rezident		S
Personal mediu sanitar					
124	6	asistent medical principal sef			PL
125	7		asistent medical principal		PL
126	8		asistent medical principal		PL
127	9		asistent medical principal		PL
128	10		asistent medical principal		PL
129	11		asistent medical principal		PL
130	12		asistent medical principal		PL
131	13		asistent medical principal		PL
132	14		asistent medical		S
133	15		asistent medical		PL
134	16		asistent medical		PL
135	17		asistent medical		PL
Personal auxiliar= infirmiere					
136	18		infirmiera		G
137	19		infirmiera		G
138	20		infirmiera		G
139	21		infirmiera		G
140	22		infirmiera		G
Personal auxiliar= ingrijitori curatenie					
141	23		îngrijitor		G
142	24		îngrijitor		G
V. COMPARTIMENT PRIMIRE URGENTE (CPU) Nr. Paturi = 8					
Personal medical superior					
143	1	medic primar - sef sectie			S
144	1		medic primar		S
145	2		medic primar		S
146	3		medic primar		S
147	4		medic specialist		S
148	5		medic specialist		S
149	6		medic specialist		S
150	7		medic specialist		S
151	8		medic specialist		S
152	9		medic specialist		S
153	10		medic specialist		S
154	11		medic specialist		S
155	12		medic specialist		S
156	13		medic specialist		S
157	14		medic rezident		S
158	15		medic rezident		S
Personal mediu sanitar					
159	2	asistent medical principal sef			PL

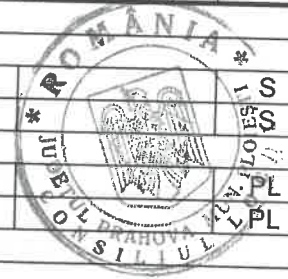
NR. CRT.	Nr. crt.	Funcția contractuală		Treapta profesională/grad	Nivelul studiilor
		de conducere	de executie		
160	16		asistent medical principal		PL
161	17		asistent medical principal		PL
162	18		asistent medical principal		PL
163	19		asistent medical principal		PL
164	20		asistent medical principal		PL
165	21		asistent medical principal		PL
166	22		asistent medical principal		PL
167	23		asistent medical principal		PL
168	24		asistent medical principal		PL
169	25		asistent medical principal		PL
170	26		asistent medical principal		PL
171	27		asistent medical		PL
172	28		asistent medical		PL
173	29		asistent medical		PL
174	30		asistent medical		PL
175	31		asistent medical		PL
176	32		asistent medical		PL
177	33		asistent medical debutant		PL
178	34		asistent medical debutant		PL
179	35		asistent medical debutant		PL
180	36		asistent medical debutant		PL
181	37		asistent medical debutant		PL
182	38		asistent medical debutant		PL
183	39		asistent medical debutant		PL
184	40		asistent medical debutant		PL
185	41		asistent medical debutant		PL
186	42		asistent medical debutant		PL
187	43		asistent medical debutant		PL
188	44		asistent medical debutant		PL
189	45		asistent medical debutant		PL
190	46		asistent medical debutant		PL
191	47		asistent medical debutant		PL
192	48		asistent medical debutant		PL
193	49		asistent medical debutant		PL
194	50		asistent medical debutant		PL
195	51		asistent medical debutant		PL
196	52		registrator medical principal		M
197	53		registrator medical principal		M
198	54		registrator medical		M
199	55		registrator medical		M
200	56		registrator medical		M
201	57		registrator medical		M
Personal auxiliar= infirmiere					
202	58		infirmiera		G
203	59		infirmiera		G
204	60		infirmiera		G
205	61		infirmiera		G
206	62		infirmiera		G
207	63		infirmiera		G
208	64		infirmiera		G
209	65		infirmiera		G
210	66		infirmiera		G
211	67		infirmiera		G
212	68		infirmiera		G
213	69		infirmiera debutant		G
214	70		infirmiera debutant		G
215	71		infirmiera debutant		G
216	72		infirmiera debutant		G
Personal auxiliar= ingrijitori curatenie					
217	73		ingrijitor		G
218	74		ingrijitor		G
219	75		ingrijitor		G
220	76		ingrijitor		G

NR. CRT.	Nr. crt.	Funcția contractuală		Treapta profesională/grad	Nivelul studiilor
		de conducere	de executie		
221	77		îngrijitor		G
222	78		îngrijitor		G
223	79		îngrijitor		G
Personal auxiliar= brancardieri					
224	80		brancardier		
225	81		brancardier		
VI. SPITALIZARE DE ZI NR. Paturi = 8					
VII. UNITATEA DE TRANSFUZIE SANGUINA					
VIII. POSTURI FIXE GENERALE					
1. FARMACIE					
Alt personal					
226	1	sef Farmacie			S
Personal mediu sanitar asistente în farmacie					
227	1		asistent medical farmacie principal		PL
228	2		asistent medical farmacie		PL
229	3		asistent medical farmacie debutant		PL
2. STERILIZARE (DIETETIC)					
Personal mediu sanitar					
230	1		asistent medical principal		S
231	2		asistent medical principal		PL
232	3		asistent medical principal		PL
233	4		asistent medical principal		PL
234	5		asistent medical		PL
3. BLOC OPERATOR					
Personal mediu sanitar					
235	1	asistent medical principal sef			PL
236	1		asistent medical principal		PL
237	2		asistent medical principal		PL
238	3		asistent medical principal		PL
239	4		asistent medical principal		PL
240	5		asistent medical principal		PL
241	6		asistent medical		PL
242	7		asistent medical		PL
Personal auxiliar= infirmiere					
243	8		infirmiera		G
244	9		infirmiera		G
245	10		infirmiera		G
4. LABORATOR ANALIZE MEDICALE + AMBULATOR					
Personal medical superior					
246	1	sef laborator			S
247	1		medic specialist		S
Alt personal					
248	2		chimist principal cu gestiune		S
249	3		biolog specialist		S
Personal mediu sanitar					
250	1	asistent medical lab.principal sef			PL
251	4		asistent medical lab.principal		PL
252	5		asistent medical lab.principal		PL
253	6		asistent medical lab.principal		PL
254	7		asistent medical lab.principal		PL
255	8		asistent medical lab.principal		PL
256	9		asistent medical lab.principal		PL
257	10		asistent medical lab.principal		PL
258	11		registrator medical principal		M
Personal auxiliar= ingrijitori curatenie laborator					
259	12		ingrijitor		G
5. LABORATOR RADIOLOGIE, IMAGISTICA MEDICALA					
Personal medical superior					
260	1	sef laborator			S
261	1		medic primar		S
262	2		medic specialist		S



NR. CRT.	Nr. crt.	Funcția contractuală		Treapta profesională/grad	Nivelul studiilor
		de conducere	de executie		
Personal mediu sanitar					
263	2	asistent medical rad.principal sef			PL
264	5		asistent medical rad.,principal		PL
265	6		asistent medical rad.,principal		PL
266	7		asistent medical rad.,principal		PL
267	8		asistent medical rad.,principal		PL
268	9		asistent medical rad.,principal		PL
269	10		asistent medical rad.,principal		PL
270	11		asistent medical radiologie		PL
271	12		asistent medical radiologie debutant		PL
Personal auxiliar= ingrijitori curatenie laborator					
272	13		ingrijitor		G
6. LABORATOR RECUPERARE MEDICINA FIZICA SI BALNEOLOGIE					
Personal medical superior					
273	1		medic specialist		S
274	2		medic rezident		S
Alt personal					
275	3		kinetoterapeut		S
276	4		kinetoterapeut debutant		S
Personal mediu sanitar					
277	5		asistent medical principal		PL
278	6		asistent medical principal		PL
279	7		asistent medical principal		PL
280	8		asistent medical debutant		PL
7. CENTRU SANATATE MINTALA COPII (CSM)					
Personal medical superior					
281	1	medic primar sef			S
282	1		medic primar		S
283	2		medic specialist		S
Alt personal					
284	3		psiholog principal		S
285	4		psiholog specialist		S
286	5		psiholog stagiar		S
287	6		psihopedagog specialist		S
288	7		kinetoterapeut		S
289	8		kinetoterapeut		S
290	9		asistent social		S
Personal mediu sanitar					
291	10		asistent medical principal		PL
292	11		asistent medical principal		PL
293	12		asistent medical principal		PL
294	13		asistent medical		PL
295	14		asistent medical debutant		PL
296	15		registrator medical		M
Personal auxiliar= infirmiere					
297	16		infirmiera		G
298	17		infirmiera		G
Personal auxiliar= ingrijitori curatenie					
299	18		ingrijitor		G
300	19		ingrijitor		G
301	20		ingrijitor		G
8. COMPARTIMENT DE PREVENIRE A INFECTIILOR ASOCIATE ASISTENTEI MEDICALE					
Personal medical superior					
302	1		medic specialist		S
303	2		medic specialist		S
304	3		medic rezident		S
Personal mediu sanitar					
305	4		asistent medical principal		PL
9. COMPARTIMENT STATISTICA SI INFORMATICA MEDICALA					
306	1		asistent medical debutant statistica		PL
307	2		statistician principal		M
308	3		statistician principal		M
309	4		statistician		M

NR. CRT.	Nr. crt.	Funcția contractuală		Treapta profesională/grad	Nivelul studiilor
		de conducere	de executie		
10. CABINET MEDICINA DENTARA (asigura si urgentele)					
Personal medical superior					
310	1		medic		
311	2		medic		
Personal mediu sanitar					
312	3		asistent medical		
313	4		asistent medical debutant		
AMBULATORIUL INTEGRAT SPITALULUI CU CABINETE IN SPECIALITATE					
1. CABINET PEDIATRIE					
Personal mediu sanitar					
314	1		asistent medical principal		PL
315	2		asistent medical principal		PL
2. CABINET OFTALMOLOGIE					
Personal medical superior					
316	1		medic primar		S
317	2		medic specialist		S
Personal mediu sanitar					
318	3		asistent medical		PL
319	4		asistent medical debutant		PL
3. CABINET ENDOCRINOLOGIE					
Personal medical superior					
320	1		medic primar		S
321	2		medic specialist		S
Personal mediu sanitar					
322	3		asistent medical principal		S
323	4		asistent medical		PL
4. CABINET O.R.L.					
Personal medical superior					
324	1		medic primar		S
325	2		medic primar		S
Personal mediu sanitar					
326	3		asistent medical principal		PL
327	4		asistent medical principal		PL
5. CABINET CHIRURGIE SI ORTOPEDIE PEDIATRICA					
Personal mediu sanitar					
328	1		asistent medical		PL
329	2		asistent medical		PL
6. CABINET DERMATOVENEROLOGIE					
Personal medical superior					
330	1		medic specialist		S
331	2		medic specialist		S
Personal mediu sanitar					
332	3		asistent medical principal		PL
333	4		asistent medical		PL
7. CABINET ORTOPTICA					
Personal medical superior					
334	1		medic specialist		S
335	2		medic rezident		S
Personal mediu sanitar					
336	3		asistent medical principal		PL
337	4		asistent medical debutant		PL
8. CABINET CARDIOLOGIE					
Personal medical superior					
338	1		medic specialist		S
339	2		medic rezident		S
Personal mediu sanitar					
340	3		asistent medical principal		PL
341	4		asistent medical debutant		PL
9. CABINET ALERGOLOGIE SI IMUNOLOGIE					
Personal medical superior					
342	1		medic specialist		S
343	2		medic specialist		S
Personal mediu sanitar					



NR. CRT.	Nr. crt.	Funcția contractuală		Treapta profesională/grad	Nivelul studiilor
		de conducere	de execuție		
344	3				
345	4		asistent medical principal		
			asistent medical debutant		
10. CABINET NEUROLOGIE PEDIATRICA					
Personal medical superior					
346	1		medic specialist		
347	2		medic rezident		
Personal mediu sanitar					
348	3		asistent medical debutant		
349	4		asistent medical debutant		PL
PERSONAL DIN APARATUL FUNCTIONAL					
Compartiment Financiar - Contabilitate					
350	1		inspector de specialitate	grad I	S
351	2		referent	treapta IA	M
352	3		referent	treapta IA	M
Compartiment Achizitii Publice, Contractare					
353	1		inspector de specialitate	grad I	S
Compartiment Juridic					
354	1		consilier juridic	grad IA	S
Compartiment Tehnic					
355	1		inspector de specialitate	grad II	S
Compartiment Securitatea Muncii, P.S.I., Protectie Civila si Situatii de Urgenta					
356	3		inspector de specialitate	grad III	S
Compartiment Informatica					
357	1		inspector de specialitate	grad I	S
Biroul Management al Calitatii Serviciilor de Sanatate					
358	1	sef birou	medic		S
359	1		consilier	grad I	S
360	2		consilier	grad I	S
361	3		consilier	grad II	S
Compartiment R.U.N.O.S.					
362	1		inspector de specialitate	grad I	S
363	2		inspector de specialitate	grad I	S
364	3		referent	treapta IA	M
Compartiment Administrativ					
365	1		inspector de specialitate	grad I	S
366	2		inspector de specialitate	grad I	S
367	3		arhivar		M
Compartiment Aprovizionare, transport					
368	1		casier		M
369	2		magaziner		M
PERSONAL DESERVIRE					
Personal de deservire - activitati de intretinere cladiri si instalatii de apa, lumina si incalzire					
370	1		muncitor calif.- instalator sanitar	treapta III	G
371	2		muncitor calif.- instalator sanitar	treapta IV	G
372	3		muncitor electrician	treapta II	G
Personal de deservire - posturi fixe- statii centrale de oxigen					
373	4		muncitor calif.- instalator	treapta II	G
374	5		muncitor calif.- instalator	treapta III	G
375	6		muncitor calif.- instalator	treapta III	G
376	7		muncitor calif.- lacatus mecanic	treapta II	G
377	8		muncitor calif.- lacatus mecanic	treapta III	G
Personal de deservire - post fix - centrala telefonica					
378	9		muncitor calificat -telefonist	treapta III	G
379	10		muncitor calificat -telefonist	treapta III	G
Personal de deservire - confectionare, reparare, intretinere inventar moale- lenjerie					
380	11		muncitor calif.- lenjereasa	treapta IV	G
Personal de deservire - aprovizionare,manipulare,depozitare si deservire mijloace de transport					
381	12		muncitor calif.	treapta IV	G
Personal de deservire - post fix - mijloc de transport					
382	13		sofer	treapta II	G
383	14		sofer	treapta II	G
Personal de deservire - preparare hrana în blocurile alimentare					
384	15		muncitor calificat - bucatar	treapta II	G

NR. CRT.	Nr. crt.	Funcția contractuală		Treapta profesională/grad	Nivelul studiilor
		de conducere	de execuție		
385	16		muncitor calificat - bucatar	treapta II	G
386	17		muncitor calificat - bucatar	treapta III	G
387	18		muncitor calificat - bucatar	treapta IV	G
388	19		muncitor necalificat		G
389	20		muncitor necalificat		G
390	21		muncitor necalificat		G
Alt personal auxiliar					
Spalatoresc					
391	22		spalatoresc		G
392	23		spalatoresc		G
393	24		spalatoresc		G
Personal auxiliar= ingrijitori curatenie					
394	25		ingrijitor		G
395	26		ingrijitor		G
396	27		ingrijitor		G
397	28		ingrijitor		G
398	29		ingrijitor		G
399	30		ingrijitor		G
400	31		ingrijitor		G
401	32		ingrijitor		G
402	33		ingrijitor		G
403	34		ingrijitor		G
404	35		ingrijitor		G
Personal medical superior (medici competente limitate)					
405	1		medic		S
406	2		medic		S
407	3		medic		S