

ROMANIA  
JUDETUL PRAHOVA  
MUNICIPIUL PLOIESTI



### EXPUNERE DE MOTIVE

**la hotararea privind aprobarea organigramei, a numarului de personal si a statelor de functii la Administratia Serviciilor Sociale Comunitare Ploiesti**

In conformitate cu prevederile OUG nr.77/2013 pentru stabilirea unor masuri privind asigurarea functionalitatii administratiei publice locale, a numarului de posturi si reducerea cheltuielilor la institutiile si autoritatile publice din subordinea, sub autoritatea sau in coordonarea Guvernului sau ministerelor, in termen de 30 de zile de la data intrarii in vigoare a acestuia, institutiile publice au obligatia de a adopta/emite actele normative/administrative de aprobare a structurii functionale.

In ceea ce priveste desfiintarea posturilor vacante la data intrarii in vigoare a OUG nr.77/2013 conform prevederilor art.1 alin.(1) la ordonanta, Administratia Serviciilor Sociale Comunitare Ploiesti, serviciu public cu personalitate juridica, in subordinea Consiliului Local al Municipiului Ploiesti, ce are ca obiect principal de activitate asigurarea serviciilor sociale la nivelul Municipiului Ploiesti, se incadreaza in exceptia prevazuta de art.1 alin(2) lit."d", in sensul ca **"nu se desfiinteaza posturile vacante din unitatile de asistenta sociala"**.

Conform prevederilor art.3 alin.(1) la OUG nr.77/2013 se reglementeaza numarul total al functiilor de conducere din cadrul institutiei, la maxim 12% din numarul total de posturi aprobate, cerinta care este indeplinita de Administratia Serviciilor Sociale Comunitare Ploiesti, astfel ca la numarul total de 742 de posturi aprobate, sunt 15 functii de conducere.

In conformitate cu prevederile Legii nr.188/1999 republicata, cu modificarile si completarile ulterioare, in data de 15.07.2013 s-a desfasurat examenul de promovare in grad profesional imediat superior celui detinut, fapt pentru care se propune transformarea la Serviciul Locuinte sociale si ajutoare incalzire locuinte a unui post de consilier clasa I, grad profesional principal in consilier clasa I, grad profesional superior;

Avand in vedere aceste considerente propunem spre aprobare Consiliului Local proiectul de hotarare anexat.

**PRIMAR,**

**IULIAN BADESCU**

A handwritten signature in blue ink, consisting of several overlapping loops and lines, positioned below the printed name.



## RAPORT DE SPECIALITATE

la hotararea privind aprobarea organigramei, a numarului de personal  
si a statelor de functii la Administratia Serviciilor Sociale Comunitare Ploiesti

Administratia Serviciilor Sociale Comunitare Ploiesti este serviciu public cu personalitate juridica, in subordinea Consiliului Local al Municipiului Ploiesti si are ca obiect principal de activitate asigurarea serviciilor sociale care se desfasoara la nivelul Municipiului Ploiesti.

In conformitate cu Hotararea Consiliului Local nr.45/27.02.2013 institutia functioneaza cu un numar total de **742 posturi aprobate**, repartizate dupa cum urmeaza:

- aparatul propriu = 123 posturi din care:
  - 69 functii publice: - 61 functii publice de executie;  
- 8 functii publice de conducere.
  - 54 posturi contractuale: - 49 posturi contractuale de executie;  
- 5 posturi contractuale de conducere.
- asistenta medicala scolara = 129 posturi (personal contractual) din care:
  - 2 posturi de conducere
  - 127 posturi de executie
- asistenti personali pentru persoane cu handicap = 490 posturi (personal contractual)

**Structura ocuparii posturilor** potrivit prevederilor OUG nr.77/2013 este urmatoarea:

- aparatul propriu
  - din total 69 functii publice:
    - a) 8 functii publice de conducere ocupate;
    - b) 49 functii publice de executie ocupate;
    - c) 12 functii publice de executie vacante, potrivit art.1 alin.2, lit "d";
  - din total 54 posturi contractuale :
    - a) 49 posturi de executie ocupate;
    - b) 4 posturi contractuale de conducere ocupate;
    - c) 1 post contractual de conducere vacant, pentru care au fost incepute procedurile de ocupare, conform art.1, alin.2, lit."c": sef serviciu Administrativ si intretinere patrimoniu
- asistenta medicala scolara
  - din total 129 de posturi:
    - a) 2 posturi contractual de conducere sunt ocupate;
    - b) 112 posturi contractuale de executie sunt ocupate;
    - c) 12 posturi sunt vacante potrivit art.1 alin.2, lit "d";

d) 3 posturi contractuale de executie sunt vacante, pentru care au fost incepute procedurile de ocupare, conform art.1 alin.2, lit."c": 1 post de medic si 2 posturi de asistenti medicali

➤ asistenti personali pentru persoane cu handicap

▪ din total 490 de posturi de executie :

a) 434 posturi contractuale ocupate;

b) 56 posturi contractuale vacante potrivit art.1 alin.2, lit "d";

De asemenea art.3 alin.(1) la OUG nr.77/2013 reglementeaza numarul total al functiilor de conducere din cadrul institutiei, la maxim 12% din numarul total de posturi aprobate, cerinta care este indeplinita de Administratia Serviciilor Sociale Comunitare Ploiesti, dupa cum urmeaza:

➤ Asistenta medicala scolara:

- din total 129 posturi aprobate, 2 sunt functii de conducere;

➤ Asistenti personali pentru persoane cu handicap:

- total posturi aprobate 490, nu sunt functii de conducere;

➤ Personal propriu:

- din total 69 functii publice aprobate, 8 sunt de conducere;

- din total 54 functii contractuale aprobate, 5 sunt de conducere.

Conform art. 3 alin ( 3) din aceeasi OUG nr.77/2013, se reglementeaza in mod expres cerintele pe care trebuie sa le respecte structura functionala a autoritatilor si institutiilor publice in ceea ce priveste numarul minim de posturi de executie pentru constituirea compartimentelor, astfel incat pentru constituirea unui serviciu este necesar un numar minim de 7 posturi de executie. Avand in vedere ca la centrul de zi pentru copii prescolari sunt doar 6 posturi de executie , propunem transformarea postului de conducere de "sef serviciu" in "sef birou".

In ceea ce priveste promovarea functionarilor publici de executie in gradul profesional imediat urmator, in conformitate cu prevederile Legii nr.188/1999 republicata, cu modificarile si completarile ulterioare, se realizeaza prin examen organizat semestrial, cu indeplinirea cumulativa a urmatoarelor conditii:

- sa aiba cel putin 3 ani vechime in gradul profesional al functiei publice din care promoveaza;
- sa fi obtinut cel putin calificativul "bine" la evaluarea performantelor individuale in ultimii doi ani calendaristici;
- sa nu aiba in cazierul administrativ o sanctiune neradiata in conditiile legii.

Urmare solicitarii Administratiei Serviciilor Sociale Comunitare Ploiesti, Agentia Nationala a Functionarilor Publici a verificat in baza de date indeplinirea cumulativa a conditiilor de catre functionarii publici propusi pentru a participa la examenul de promovare in gradul profesional imediat superior celui detinut si a eliberat adresa nr.19325/2013, anexata, in care a nominalizat membrii in comisiile de concurs si de solutionare a contestatiilor. Astfel, un singur functionar public de executie a indeplinit cumulativ conditiile si a promovat examenul ce s-a desfasurat in data de 15.07.2013, conform raportului final anexat, drept pentru care, propunem urmatoarea transformare:

- la Serviciul Locuinte sociale si ajutoare incalzire locuinte - 1 post de consilier clasa I, grad profesional principal in consilier clasa I, grad profesional superior;



Ca urmare, avand in vedere prevederile art.4 la OUG nr.77/2013, referitoare la obligatia institutiilor publice ca in termen de 30 de zile de la data intrarii in vigoare a ordonantei, sa adopte/emite actele normative/administrative de aprobare a structurii functionale, avizam favorabil proiectul de hotarare anexat.



**Administratia Serviciilor Sociale Comunitare Ploiesti**

Director General,

**Dinu Ion Dan**



-Sef Serviciu Juridic, Autoritate Tutelara,

**Chiva Daniela Simona**

-Sef Birou Securitatea Muncii,

Situatii Urgenta, Resurse Umane

**Balaci Cristian**

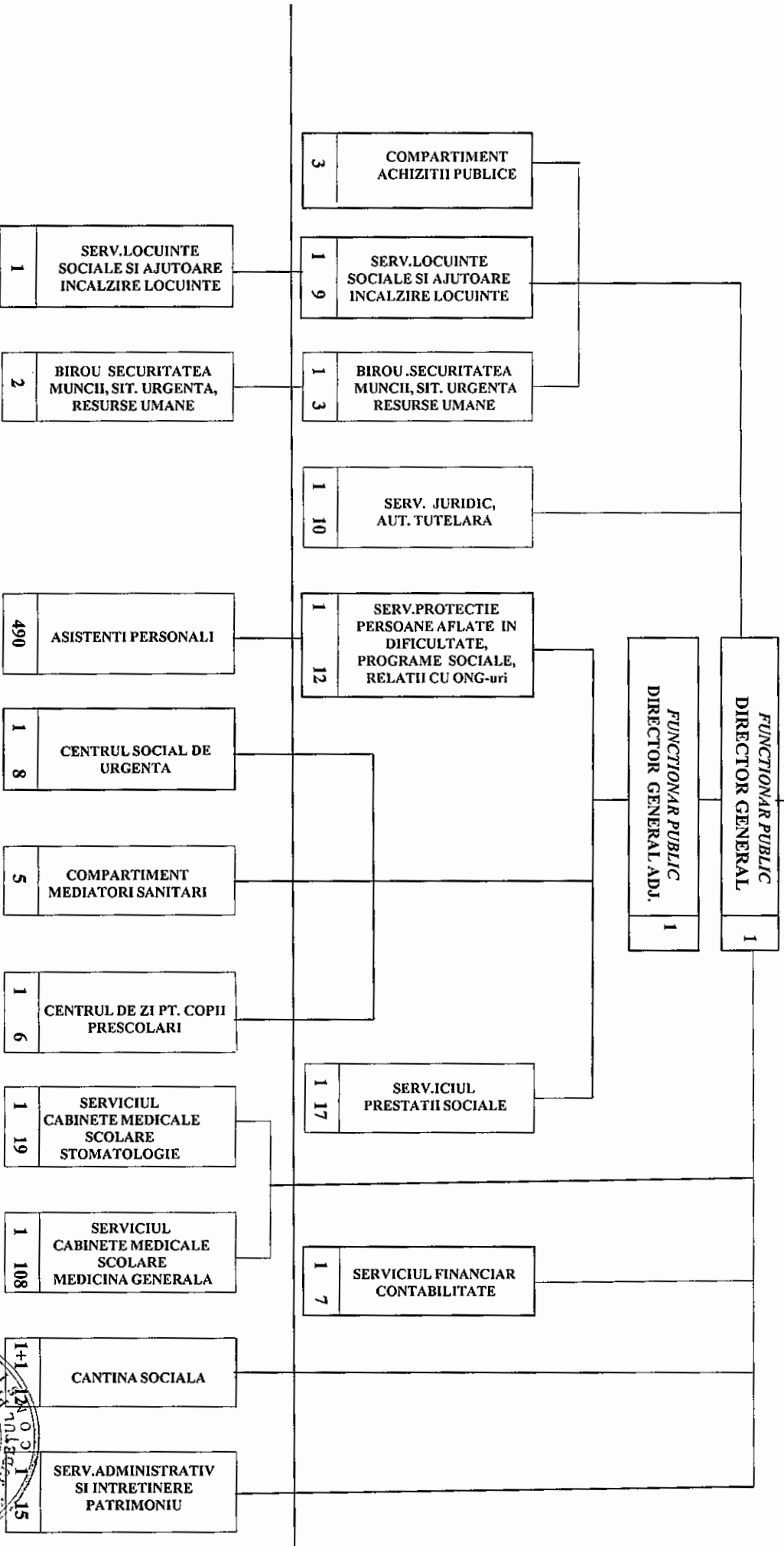
**Primaria Municipiului Ploiesti**

Directia Administratie Publica,  
Juridic-Contencios, Contracte

**Alexandru Iulia-Alina**

CONSILIUL LOCAL

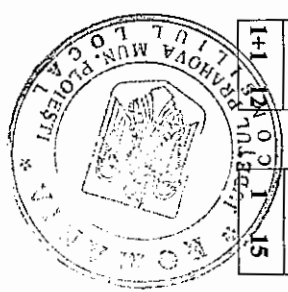
ADMINISTRATIA SERVICIILOR SOCIALE COMUNITARE



TOTAL: 742  
Conducere 69  
Executie 61

Functionari publici    Personal contractual    Asistenti personali    Asistenta medicala scolara

69    54    490    129  
8    5    -    2  
61    49    490    127



Anexa nr. 4 la HCL  
municipal nr. 20/13.

## STAT DE FUNCȚII

Nr. crt.	STRUCTURA	Funcția publică			Clasa	Gradul profesional	Treapta de salarizare	Nivelul studiilor	Funcția contractuală		
		înalt funcționar public	de conducere **	de execuție					de conducere	de execuție	IA
<b>CONDUCERE</b>											
1			director general				II				
2			director general adjunct				I				
<b>COMPARTIMENT ACHIZITII PUBLICE</b>											
3			consilier	I	superior		S				
4			consilier	I	principal		S				
5			consilier	I	principal		S				
<b>SERVICIUL LOCUINTE SOCIALE SI AJUTOARE INCALZIRE LOCUINTE</b>											
6			sef serviciu				II				
7			consilier	I	superior		S				
8			consilier	I	superior		S				
9			consilier	I	superior		S				
10			consilier	I	principal		S				
11			consilier	I	principal		S				
12			consilier	I	asistent		S				
13			referent de specialitate	II	superior		SSD				
14			referent	III	superior		M				
15			referent	III	superior		M				
16										referent	IA M
<b>BIROU SECURITATEA MUNCII, SITUATII DE URGENTA, RESURSE UMANE</b>											
17			sef birou				I				
18			consilier	I	superior		S				
19			consilier	I	superior		S				
20			consilier	I	principal		S				
21										inspector de specialitate	IA S
22										inspector de specialitate	IA S
<b>SERVICIUL JURIDIC, AUTORITATE TUTELARA</b>											
23			sef serviciu				I				
24			consilier juridic	I	principal		S				
25			consilier	I	superior		S				
26			consilier	I	superior		S				
27			consilier	I	superior		S				
28			consilier	I	superior		S				
29			consilier	I	superior		S				
30			consilier	I	superior		S				
31			consilier	I	principal		S				
32			consilier	I	principal		S				
33			referent de specialitate	II	superior		SSD				
<b>SERVICIUL PROTECTIE PERSOANE AFLATE IN DIFICULTATE, PROGRAME SOCIALE, RELATII CU ONG-URI</b>											
34			sef serviciu				I				
35			consilier	I	superior		S				
36			consilier	I	superior		S				
37			consilier	I	superior		S				
38			consilier	I	superior		S				
39			consilier	I	superior		S				
40			consilier	I	superior		S				
41			consilier	I	superior		S				
42			consilier	I	superior		S				
43			consilier	I	principal		S				
44			consilier	I	principal		S				
45			consilier	I	principal		S				



46			consilier	I	asistent		S			
<b>SERVICIUL PRESTATII SOCIALE</b>										
47			sef serviciu			II				
48			consilier	I	superior		S			
49			consilier	I	superior		S			
50			consilier	I	superior		S			
51			consilier	I	superior		S			
52			consilier	I	superior		S			
53			consilier	I	superior		S			
54			consilier	I	superior		S			
55			consilier	I	superior		S			
56			consilier	I	superior		S			
57			consilier	I	superior		S			
58			consilier	I	superior		S			
59			consilier	I	superior		S			
60			consilier	I	principal		S			
61			consilier	I	principal		S			
62			consilier	I	principal		S			
63			referent	III	superior		M			
64			referent	III	superior		M			
<b>SERVICIUL FINANCIAR CONTABILITATE</b>										
65			sef serviciu			I				
66			consilier	I	superior		S			
67			consilier	I	superior		S			
68			consilier	I	superior		S			
69			consilier	I	principal		S			
70			consilier	I	principal		S			
71			consilier	I	superior		S			
72			consilier	I	debutant		S			
<b>SERVICIUL ADMINISTRATIV SI INTRETINERE PATRIMONIU</b>										
73							sef serviciu		II	
74							inspector de specialitate		IA	S
75							inspector de specialitate		IA	S
76							inspector de specialitate		IA	S
77							referent		IA	M
78							referent		IA	M
79							sofer		I	
80							sofer		I	
81							sofer		I	
82							sofer		I	
83							manipulant bunuri			
84							munc.calif. Instalator		I	
85							munc.calif. lacatus		I	
86							munc.calif. Zugrav		I	
87							muncitor necalificat		I	
88							muncitor necalificat		I	
<b>CENTRUL DE ZI PENTRU COPII PRESCOLARI</b>										
89							sef birou		I	
90							psiholog		princi pal	S
91							psiholog		princi pal	S
92							educator		princi pal	S
93							educator		princi pal	S
94							munc.calif. Bucatar		I	
95							muncitor necalificat		I	



CENTRUL SOCIAL DE URGENTA										
96									sef serviciu	
97									inspector de specialitate	II S
98									asistent medical	princi pal. RL G
99									infirmiera	
100									muncitor necalificat	I
101									muncitor necalificat	I
102									muncitor necalificat	I
103									muncitor necalificat	I
104									muncitor necalificat	I
CANTINA SOCIALA										
105									sef serviciu	II
106									referent	IA M
107									magaziner	I M
108									sef formatie muncitori	II
109									munc.calif. Bucatar	I
110									munc.calif. Bucatar	I
111									munc.calif. Bucatar	I
112									munc.calif. Bucatar	I
113									munc.calif. Bucatar	I
114									munc.calif. Bucatar	I
115									munc.calif. Bucatar	I
116									munc.calif. Bucatar	I
117									munc.calif. Bucatar	I
118									muncitor necalificat	I
COMPARTIMENT MEDIATORI SANITARI										
119									mediator sanitar	princi pal M
120									mediator sanitar	princi pal M
121									mediator sanitar	princi pal M
122									mediator sanitar	princi pal M
123									mediator sanitar	princi pal M

NR. TOTAL FUNCȚII PUBLICE	59
NR. TOTAL FUNCȚII PUBLICE DE CONDUCERE	8
NR. TOTAL FUNCȚII PUBLICE DE EXECUȚIE	51
NR. TOTAL FUNCȚII CONTRACTUALE DE CONDUCERE	3
NR. TOTAL FUNCȚII CONTRACTUALE DE EXECUȚIE	43
NR. TOTAL FUNCȚII ÎN ÎNSTITUȚIE	123

DIRECTOR GENERAL  
 DINU ION DAN

STAT DE FUNCTII CABINETE MEDICALE SCOLARE

Nr. crt.	STRUCTURA	Funcția contractuală		Nivelul studiilor	Treapta profesională	observatii
		de conducere	de execuție			
<b>CABINETE MEDICALE SCOLARE MEDICINA GENERALA</b>						
1		sef serviciu		S	I	
2			MEDIC	S	PRIMAR	
3			MEDIC	S	PRIMAR	
4			MEDIC	S	PRIMAR	
5			MEDIC	S	PRIMAR	
6			MEDIC	S	PRIMAR	
7			MEDIC	S	SPECIALIST	
8			MEDIC	S	SPECIALIST	
9			MEDIC	S	SPECIALIST	
10			MEDIC	S	SPECIALIST	
11			MEDIC	S	SPECIALIST	
12			MEDIC	S	SPECIALIST	
13			MEDIC	S	SPECIALIST	
14			MEDIC	S	X	
15			MEDIC	S	X	
16			MEDIC	S	X	
17			MEDIC	S	X	
18			MEDIC	S	X	
19			ASIST. MED.	PL	PRINCIPAL	
20			ASIST. MED.	PL	PRINCIPAL	
21			ASIST. MED.	PL	PRINCIPAL	
22			ASIST. MED.	PL	PRINCIPAL	
23			ASIST. MED.	PL	PRINCIPAL	
24			ASIST. MED.	PL	PRINCIPAL	
25			ASIST. MED.	PL	PRINCIPAL	
26			ASIST. MED.	PL	PRINCIPAL	
27			ASIST. MED.	PL	PRINCIPAL	
28			ASIST. MED.	PL	PRINCIPAL	
29			ASIST. MED.	PL	PRINCIPAL	
30			ASIST. MED.	PL	PRINCIPAL	
31			ASIST. MED.	PL	PRINCIPAL	
32			ASIST. MED.	PL	PRINCIPAL	
33			ASIST. MED.	PL	PRINCIPAL	
34			ASIST. MED.	PL	PRINCIPAL	
35			ASIST. MED.	PL	PRINCIPAL	
36			ASIST. MED.	PL	PRINCIPAL	
37			ASIST. MED.	PL	PRINCIPAL	
38			ASIST. MED.	PL	PRINCIPAL	
39			ASIST. MED.	PL	PRINCIPAL	
40			ASIST. MED.	PL	PRINCIPAL	
41			ASIST. MED.	PL	PRINCIPAL	
42			ASIST. MED.	PL	PRINCIPAL	
43			ASIST. MED.	PL	PRINCIPAL	
44			ASIST. MED.	PL	PRINCIPAL	
45			ASIST. MED.	PL	PRINCIPAL	
46			ASIST. MED.	PL	PRINCIPAL	
47			ASIST. MED.	PL	PRINCIPAL	
48			ASIST. MED.	PL	PRINCIPAL	
49			ASIST. MED.	PL	PRINCIPAL	
50			ASIST. MED.	PL	PRINCIPAL	
51			ASIST. MED.	PL	PRINCIPAL	
52			ASIST. MED.	PL	PRINCIPAL	
53			ASIST. MED.	PL	PRINCIPAL	
54			ASIST. MED.	PL	PRINCIPAL	
55			ASIST. MED.	PL	PRINCIPAL	
56			ASIST. MED.	PL	PRINCIPAL	
57			ASIST. MED.	PL	PRINCIPAL	
58			ASIST. MED.	PL	PRINCIPAL	
59			ASIST. MED.	PL	PRINCIPAL	
60			ASIST. MED.	PL	PRINCIPAL	
61			ASIST. MED.	PL	PRINCIPAL	
62			ASIST. MED.	PL	PRINCIPAL	
63			ASIST. MED.	PL	PRINCIPAL	
64			ASIST. MED.	PL	PRINCIPAL	
65			ASIST. MED.	PL	PRINCIPAL	
66			ASIST. MED.	PL	PRINCIPAL	
67			ASIST. MED.	PL	PRINCIPAL	
68			ASIST. MED.	PL	PRINCIPAL	
69			ASIST. MED.	PL	PRINCIPAL	

ANEXA NR. 3



70		ASIST. MED.	PL	PRINCIPAL
71		ASIST. MED.	PL	PRINCIPAL
72		ASIST. MED.	PL	PRINCIPAL
73		ASIST. MED.	PL	PRINCIPAL
74		ASIST. MED.	PL	PRINCIPAL
75		ASIST. MED.	PL	PRINCIPAL
76		ASIST. MED.	PL	PRINCIPAL
77		ASIST. MED.	PL	PRINCIPAL
78		ASIST. MED.	PL	PRINCIPAL
79		ASIST. MED.	PL	PRINCIPAL
80		ASIST. MED.	PL	PRINCIPAL
81		ASIST. MED.	PL	PRINCIPAL
82		ASIST. MED.	PL	PRINCIPAL
83		ASIST. MED.	PL	PRINCIPAL
84		ASIST. MED.	PL	PRINCIPAL
85		ASIST. MED.	PL	PRINCIPAL
86		ASIST. MED.	PL	PRINCIPAL
87		ASIST. MED.	PL	PRINCIPAL
88		ASIST. MED.	PL	PRINCIPAL
89		ASIST. MED.	PL	PRINCIPAL
90		ASIST. MED.	PL	PRINCIPAL
91		ASIST. MED.	PL	PRINCIPAL
92		ASIST. MED.	PL	X
93		ASIST. MED.	PL	X
94		ASIST. MED.	PL	X
95		ASIST. MED.	PL	X
96		ASIST. MED.	PL	X
97		ASIST. MED.	PL	X
98		ASIST. MED.	PL	X
99		ASIST. MED.	PL	X
100		ASIST. MED.	PL	X
101		ASIST. MED.	PL	X
102		ASIST. MED.	PL	X
103		ASIST. MED.	PL	X
104		ASIST. MED.	PL	X
105		ASIST. MED.	PL	X
106		ASIST. MED.	PL	X
107		ASIST. MED.	PL	X
108		ASIST. MED.	PL	X
109		ASIST. MED.	PL	X



**CABINETE MEDICALE SCOLARE STOMATOLOGIE**

110	SEF SERVICIU		S	
111		MEDIC	S	SPECIALIST
112		MEDIC	S	SPECIALIST
113		MEDIC	S	SPECIALIST
114		MEDIC	S	X
115		MEDIC	S	X
116		MEDIC	S	X
117		MEDIC	S	X
118		MEDIC	S	X
119		MEDIC	S	X
120		ASIST. MED.	SSD	PRINCIPAL
121		ASIST. MED.	SSD	PRINCIPAL
122		ASIST. MED.	PL	PRINCIPAL
123		ASIST. MED.	PL	PRINCIPAL
124		ASIST. MED.	PL	PRINCIPAL
125		ASIST. MED.	PL	PRINCIPAL
126		ASIST. MED.	PL	DEBUTANT
127		ASIST. MED.	PL	DEBUTANT
128			PL	X
129			PL	X

NR. TOTAL FUNCȚII CONTRACTUALE	129
NR. TOTAL FUNCȚII CONTRACTUALE DE CONDUCERE	2
NR. TOTAL FUNCȚII CONTRACTUALE DE EXECUTIE	127

\*\*sub fiecare șef de structură se vor trece toate funcțiile publice și tot personalul contractual  
 \*\*\* FIECARE INSTITUȚIE ÎȘI VA ADAPTA MODELUL ÎN FUNCȚIE DE SITUAȚIA CONCRETĂ

DIRECTOR GENERAL



**STAT DE FUNCTII**  
**ASISTENTI PERSONALI**

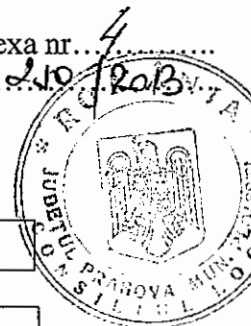
NR. CRT	Denumire compartiment si functie	categorie	Nivel studii
1	Asistent personal	Personal contractual	M
2	Asistent personal	Personal contractual	M
3	Asistent personal	Personal contractual	M
4	Asistent personal	Personal contractual	M
5	Asistent personal	Personal contractual	M
6	Asistent personal	Personal contractual	M
7	Asistent personal	Personal contractual	M
8	Asistent personal	Personal contractual	M
9	Asistent personal	Personal contractual	M
10	Asistent personal	Personal contractual	M
11	Asistent personal	Personal contractual	M
12	Asistent personal	Personal contractual	M
13	Asistent personal	Personal contractual	M
14	Asistent personal	Personal contractual	M
15	Asistent personal	Personal contractual	M
16	Asistent personal	Personal contractual	M
17	Asistent personal	Personal contractual	M
18	Asistent personal	Personal contractual	M
19	Asistent personal	Personal contractual	M
20	Asistent personal	Personal contractual	M
21	Asistent personal	Personal contractual	M
22	Asistent personal	Personal contractual	M
23	Asistent personal	Personal contractual	M
24	Asistent personal	Personal contractual	M
25	Asistent personal	Personal contractual	M
26	Asistent personal	Personal contractual	M
27	Asistent personal	Personal contractual	M
28	Asistent personal	Personal contractual	M
29	Asistent personal	Personal contractual	M
30	Asistent personal	Personal contractual	M
31	Asistent personal	Personal contractual	M
32	Asistent personal	Personal contractual	M
33	Asistent personal	Personal contractual	M
34	Asistent personal	Personal contractual	M
35	Asistent personal	Personal contractual	M
36	Asistent personal	Personal contractual	M
37	Asistent personal	Personal contractual	M
38	Asistent personal	Personal contractual	M
39	Asistent personal	Personal contractual	M
40	Asistent personal	Personal contractual	M
41	Asistent personal	Personal contractual	M
42	Asistent personal	Personal contractual	M
43	Asistent personal	Personal contractual	M
44	Asistent personal	Personal contractual	M
45	Asistent personal	Personal contractual	M
46	Asistent personal	Personal contractual	M
47	Asistent personal	Personal contractual	M

**STAT DE FUNCTII**  
**ASISTENTI PERSONALI**

NR. CRT	Denumire compartiment si functie	categorie	Nivel studii
48	Asistent personal	Personal contractual	M
49	Asistent personal	Personal contractual	M
50	Asistent personal	Personal contractual	M
51	Asistent personal	Personal contractual	M
52	Asistent personal	Personal contractual	M
53	Asistent personal	Personal contractual	M
54	Asistent personal	Personal contractual	M
55	Asistent personal	Personal contractual	M
56	Asistent personal	Personal contractual	M
57	Asistent personal	Personal contractual	M
58	Asistent personal	Personal contractual	M
59	Asistent personal	Personal contractual	M
60	Asistent personal	Personal contractual	M
61	Asistent personal	Personal contractual	M
62	Asistent personal	Personal contractual	M
63	Asistent personal	Personal contractual	M
64	Asistent personal	Personal contractual	M
65	Asistent personal	Personal contractual	M
66	Asistent personal	Personal contractual	M
67	Asistent personal	Personal contractual	M
68	Asistent personal	Personal contractual	M
69	Asistent personal	Personal contractual	M
70	Asistent personal	Personal contractual	M
71	Asistent personal	Personal contractual	M
72	Asistent personal	Personal contractual	M
73	Asistent personal	Personal contractual	M
74	Asistent personal	Personal contractual	M
75	Asistent personal	Personal contractual	M
76	Asistent personal	Personal contractual	M
77	Asistent personal	Personal contractual	M
78	Asistent personal	Personal contractual	M
79	Asistent personal	Personal contractual	M
80	Asistent personal	Personal contractual	M
81	Asistent personal	Personal contractual	M
82	Asistent personal	Personal contractual	M
83	Asistent personal	Personal contractual	M
84	Asistent personal	Personal contractual	M
85	Asistent personal	Personal contractual	M
86	Asistent personal	Personal contractual	M
87	Asistent personal	Personal contractual	M
88	Asistent personal	Personal contractual	M
89	Asistent personal	Personal contractual	M
90	Asistent personal	Personal contractual	M
91	Asistent personal	Personal contractual	M
92	Asistent personal	Personal contractual	M
93	Asistent personal	Personal contractual	M
94	Asistent personal	Personal contractual	M

**STAT DE FUNCTII**  
**ASISTENTI PERSONALI**

NR. CRT	Denumire compartiment si functie	categorie	Nivel studii
95	Asistent personal	Personal contractual	M
96	Asistent personal	Personal contractual	M
97	Asistent personal	Personal contractual	M
98	Asistent personal	Personal contractual	M
99	Asistent personal	Personal contractual	M
100	Asistent personal	Personal contractual	M
101	Asistent personal	Personal contractual	M
102	Asistent personal	Personal contractual	M
103	Asistent personal	Personal contractual	M
104	Asistent personal	Personal contractual	M
105	Asistent personal	Personal contractual	M
106	Asistent personal	Personal contractual	M
107	Asistent personal	Personal contractual	M
108	Asistent personal	Personal contractual	M
109	Asistent personal	Personal contractual	M
110	Asistent personal	Personal contractual	M
111	Asistent personal	Personal contractual	M
112	Asistent personal	Personal contractual	M
113	Asistent personal	Personal contractual	M
114	Asistent personal	Personal contractual	M
115	Asistent personal	Personal contractual	M
116	Asistent personal	Personal contractual	M
117	Asistent personal	Personal contractual	M
118	Asistent personal	Personal contractual	M
119	Asistent personal	Personal contractual	M
120	Asistent personal	Personal contractual	M
121	Asistent personal	Personal contractual	M
122	Asistent personal	Personal contractual	M
123	Asistent personal	Personal contractual	M
124	Asistent personal	Personal contractual	M
125	Asistent personal	Personal contractual	M
126	Asistent personal	Personal contractual	M
127	Asistent personal	Personal contractual	M
128	Asistent personal	Personal contractual	M
129	Asistent personal	Personal contractual	M
130	Asistent personal	Personal contractual	M
131	Asistent personal	Personal contractual	M
132	Asistent personal	Personal contractual	M
133	Asistent personal	Personal contractual	M
134	Asistent personal	Personal contractual	M
135	Asistent personal	Personal contractual	M
136	Asistent personal	Personal contractual	M
137	Asistent personal	Personal contractual	M
138	Asistent personal	Personal contractual	M
139	Asistent personal	Personal contractual	M
140	Asistent personal	Personal contractual	M
141	Asistent personal	Personal contractual	M

**STAT DE FUNCTII**  
**ASISTENTI PERSONALI**

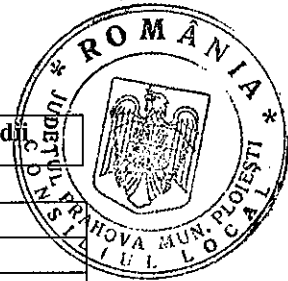
NR. CRT	Denumire compartiment si functie	categorie	Nivel studii
142	Asistent personal	Personal contractual	M
143	Asistent personal	Personal contractual	M
144	Asistent personal	Personal contractual	M
145	Asistent personal	Personal contractual	M
146	Asistent personal	Personal contractual	M
147	Asistent personal	Personal contractual	M
148	Asistent personal	Personal contractual	M
149	Asistent personal	Personal contractual	M
150	Asistent personal	Personal contractual	M
151	Asistent personal	Personal contractual	M
152	Asistent personal	Personal contractual	M
153	Asistent personal	Personal contractual	M
154	Asistent personal	Personal contractual	M
155	Asistent personal	Personal contractual	M
156	Asistent personal	Personal contractual	M
157	Asistent personal	Personal contractual	M
158	Asistent personal	Personal contractual	M
159	Asistent personal	Personal contractual	M
160	Asistent personal	Personal contractual	M
161	Asistent personal	Personal contractual	M
162	Asistent personal	Personal contractual	M
163	Asistent personal	Personal contractual	M
164	Asistent personal	Personal contractual	M
165	Asistent personal	Personal contractual	M
166	Asistent personal	Personal contractual	M
167	Asistent personal	Personal contractual	M
168	Asistent personal	Personal contractual	M
169	Asistent personal	Personal contractual	M
170	Asistent personal	Personal contractual	M
171	Asistent personal	Personal contractual	M
172	Asistent personal	Personal contractual	M
173	Asistent personal	Personal contractual	M
174	Asistent personal	Personal contractual	M
175	Asistent personal	Personal contractual	M
176	Asistent personal	Personal contractual	M
177	Asistent personal	Personal contractual	M
178	Asistent personal	Personal contractual	M
179	Asistent personal	Personal contractual	M
180	Asistent personal	Personal contractual	M
181	Asistent personal	Personal contractual	M
182	Asistent personal	Personal contractual	M
183	Asistent personal	Personal contractual	M
184	Asistent personal	Personal contractual	M
185	Asistent personal	Personal contractual	M
186	Asistent personal	Personal contractual	M
187	Asistent personal	Personal contractual	M
188	Asistent personal	Personal contractual	M

**STAT DE FUNCTII**  
**ASISTENTI PERSONALI**

NR. CRT	Denumire compartiment si functie	categorie	Nivel studii
189	Asistent personal	Personal contractual	M
190	Asistent personal	Personal contractual	M
191	Asistent personal	Personal contractual	M
192	Asistent personal	Personal contractual	M
193	Asistent personal	Personal contractual	M
194	Asistent personal	Personal contractual	M
195	Asistent personal	Personal contractual	M
196	Asistent personal	Personal contractual	M
197	Asistent personal	Personal contractual	M
198	Asistent personal	Personal contractual	M
199	Asistent personal	Personal contractual	M
200	Asistent personal	Personal contractual	M
201	Asistent personal	Personal contractual	M
202	Asistent personal	Personal contractual	M
203	Asistent personal	Personal contractual	M
204	Asistent personal	Personal contractual	M
205	Asistent personal	Personal contractual	M
206	Asistent personal	Personal contractual	M
207	Asistent personal	Personal contractual	M
208	Asistent personal	Personal contractual	M
209	Asistent personal	Personal contractual	M
210	Asistent personal	Personal contractual	M
211	Asistent personal	Personal contractual	M
212	Asistent personal	Personal contractual	M
213	Asistent personal	Personal contractual	M
214	Asistent personal	Personal contractual	M
215	Asistent personal	Personal contractual	M
216	Asistent personal	Personal contractual	M
217	Asistent personal	Personal contractual	M
218	Asistent personal	Personal contractual	M
219	Asistent personal	Personal contractual	M
220	Asistent personal	Personal contractual	M
221	Asistent personal	Personal contractual	M
222	Asistent personal	Personal contractual	M
223	Asistent personal	Personal contractual	M
224	Asistent personal	Personal contractual	M
225	Asistent personal	Personal contractual	M
226	Asistent personal	Personal contractual	M
227	Asistent personal	Personal contractual	M
228	Asistent personal	Personal contractual	M
229	Asistent personal	Personal contractual	M
230	Asistent personal	Personal contractual	M
231	Asistent personal	Personal contractual	M
232	Asistent personal	Personal contractual	M
233	Asistent personal	Personal contractual	M
234	Asistent personal	Personal contractual	M
235	Asistent personal	Personal contractual	M

**STAT DE FUNCTII**  
**ASISTENTI PERSONALI**

NR. CRT	Denumire compartiment si functie	categorie	Nivel studii
236	Asistent personal	Personal contractual	M
237	Asistent personal	Personal contractual	M
238	Asistent personal	Personal contractual	M
239	Asistent personal	Personal contractual	M
240	Asistent personal	Personal contractual	M
241	Asistent personal	Personal contractual	M
242	Asistent personal	Personal contractual	M
243	Asistent personal	Personal contractual	M
244	Asistent personal	Personal contractual	M
245	Asistent personal	Personal contractual	M
246	Asistent personal	Personal contractual	M
247	Asistent personal	Personal contractual	M
248	Asistent personal	Personal contractual	M
249	Asistent personal	Personal contractual	M
250	Asistent personal	Personal contractual	M
251	Asistent personal	Personal contractual	M
252	Asistent personal	Personal contractual	M
253	Asistent personal	Personal contractual	M
254	Asistent personal	Personal contractual	M
255	Asistent personal	Personal contractual	M
256	Asistent personal	Personal contractual	M
257	Asistent personal	Personal contractual	M
258	Asistent personal	Personal contractual	M
259	Asistent personal	Personal contractual	M
260	Asistent personal	Personal contractual	M
261	Asistent personal	Personal contractual	M
262	Asistent personal	Personal contractual	M
263	Asistent personal	Personal contractual	M
264	Asistent personal	Personal contractual	M
265	Asistent personal	Personal contractual	M
266	Asistent personal	Personal contractual	M
267	Asistent personal	Personal contractual	M
268	Asistent personal	Personal contractual	M
269	Asistent personal	Personal contractual	M
270	Asistent personal	Personal contractual	M
271	Asistent personal	Personal contractual	M
272	Asistent personal	Personal contractual	M
273	Asistent personal	Personal contractual	M
274	Asistent personal	Personal contractual	M
275	Asistent personal	Personal contractual	M
276	Asistent personal	Personal contractual	M
277	Asistent personal	Personal contractual	M
278	Asistent personal	Personal contractual	M
279	Asistent personal	Personal contractual	M
280	Asistent personal	Personal contractual	M
281	Asistent personal	Personal contractual	M
282	Asistent personal	Personal contractual	M

**STAT DE FUNCTII**  
**ASISTENTI PERSONALI**

NR. CRT	Denumire compartiment si functie	categorie	Nivel studii
283	Asistent personal	Personal contractual	M
284	Asistent personal	Personal contractual	M
285	Asistent personal	Personal contractual	M
286	Asistent personal	Personal contractual	M
287	Asistent personal	Personal contractual	M
288	Asistent personal	Personal contractual	M
289	Asistent personal	Personal contractual	M
290	Asistent personal	Personal contractual	M
291	Asistent personal	Personal contractual	M
292	Asistent personal	Personal contractual	M
293	Asistent personal	Personal contractual	M
294	Asistent personal	Personal contractual	M
295	Asistent personal	Personal contractual	M
296	Asistent personal	Personal contractual	M
297	Asistent personal	Personal contractual	M
298	Asistent personal	Personal contractual	M
299	Asistent personal	Personal contractual	M
300	Asistent personal	Personal contractual	M
301	Asistent personal	Personal contractual	M
302	Asistent personal	Personal contractual	M
303	Asistent personal	Personal contractual	M
304	Asistent personal	Personal contractual	M
305	Asistent personal	Personal contractual	M
306	Asistent personal	Personal contractual	M
307	Asistent personal	Personal contractual	M
308	Asistent personal	Personal contractual	M
309	Asistent personal	Personal contractual	M
310	Asistent personal	Personal contractual	M
311	Asistent personal	Personal contractual	M
312	Asistent personal	Personal contractual	M
313	Asistent personal	Personal contractual	M
314	Asistent personal	Personal contractual	M
315	Asistent personal	Personal contractual	M
316	Asistent personal	Personal contractual	M
317	Asistent personal	Personal contractual	M
318	Asistent personal	Personal contractual	M
319	Asistent personal	Personal contractual	M
320	Asistent personal	Personal contractual	M
321	Asistent personal	Personal contractual	M
322	Asistent personal	Personal contractual	M
323	Asistent personal	Personal contractual	M
324	Asistent personal	Personal contractual	M
325	Asistent personal	Personal contractual	M
326	Asistent personal	Personal contractual	M
327	Asistent personal	Personal contractual	M
328	Asistent personal	Personal contractual	M
329	Asistent personal	Personal contractual	M

**STAT DE FUNCTII**  
**ASISTENTI PERSONALI**

NR. CRT	Denumire compartiment si functie	categorie	Nivel studii
330	Asistent personal	Personal contractual	M
331	Asistent personal	Personal contractual	M
332	Asistent personal	Personal contractual	M
333	Asistent personal	Personal contractual	M
334	Asistent personal	Personal contractual	M
335	Asistent personal	Personal contractual	M
336	Asistent personal	Personal contractual	M
337	Asistent personal	Personal contractual	M
338	Asistent personal	Personal contractual	M
339	Asistent personal	Personal contractual	M
340	Asistent personal	Personal contractual	M
341	Asistent personal	Personal contractual	M
342	Asistent personal	Personal contractual	M
343	Asistent personal	Personal contractual	M
344	Asistent personal	Personal contractual	M
345	Asistent personal	Personal contractual	M
346	Asistent personal	Personal contractual	M
347	Asistent personal	Personal contractual	M
348	Asistent personal	Personal contractual	M
349	Asistent personal	Personal contractual	M
350	Asistent personal	Personal contractual	M
351	Asistent personal	Personal contractual	M
352	Asistent personal	Personal contractual	M
353	Asistent personal	Personal contractual	M
354	Asistent personal	Personal contractual	M
355	Asistent personal	Personal contractual	M
356	Asistent personal	Personal contractual	M
357	Asistent personal	Personal contractual	M
358	Asistent personal	Personal contractual	M
359	Asistent personal	Personal contractual	M
360	Asistent personal	Personal contractual	M
361	Asistent personal	Personal contractual	M
362	Asistent personal	Personal contractual	M
363	Asistent personal	Personal contractual	M
364	Asistent personal	Personal contractual	M
365	Asistent personal	Personal contractual	M
366	Asistent personal	Personal contractual	M
367	Asistent personal	Personal contractual	M
368	Asistent personal	Personal contractual	M
369	Asistent personal	Personal contractual	M
370	Asistent personal	Personal contractual	M
371	Asistent personal	Personal contractual	M
372	Asistent personal	Personal contractual	M
373	Asistent personal	Personal contractual	M
374	Asistent personal	Personal contractual	M
375	Asistent personal	Personal contractual	M
376	Asistent personal	Personal contractual	M

**STAT DE FUNCTII**  
**ASISTENTI PERSONALI**

NR. CRT	Denumire compartiment si functie	categorie	Nivel studii
377	Asistent personal	Personal contractual	M
378	Asistent personal	Personal contractual	M
379	Asistent personal	Personal contractual	M
380	Asistent personal	Personal contractual	M
381	Asistent personal	Personal contractual	M
382	Asistent personal	Personal contractual	M
383	Asistent personal	Personal contractual	M
384	Asistent personal	Personal contractual	M
385	Asistent personal	Personal contractual	M
386	Asistent personal	Personal contractual	M
387	Asistent personal	Personal contractual	M
388	Asistent personal	Personal contractual	M
389	Asistent personal	Personal contractual	M
390	Asistent personal	Personal contractual	M
391	Asistent personal	Personal contractual	M
392	Asistent personal	Personal contractual	M
393	Asistent personal	Personal contractual	M
394	Asistent personal	Personal contractual	M
395	Asistent personal	Personal contractual	M
396	Asistent personal	Personal contractual	M
397	Asistent personal	Personal contractual	M
398	Asistent personal	Personal contractual	M
399	Asistent personal	Personal contractual	M
400	Asistent personal	Personal contractual	M
401	Asistent personal	Personal contractual	M
402	Asistent personal	Personal contractual	M
403	Asistent personal	Personal contractual	M
404	Asistent personal	Personal contractual	M
405	Asistent personal	Personal contractual	M
406	Asistent personal	Personal contractual	M
407	Asistent personal	Personal contractual	M
408	Asistent personal	Personal contractual	M
409	Asistent personal	Personal contractual	M
410	Asistent personal	Personal contractual	M
411	Asistent personal	Personal contractual	M
412	Asistent personal	Personal contractual	M
413	Asistent personal	Personal contractual	M
414	Asistent personal	Personal contractual	M
415	Asistent personal	Personal contractual	M
416	Asistent personal	Personal contractual	M
417	Asistent personal	Personal contractual	M
418	Asistent personal	Personal contractual	M
419	Asistent personal	Personal contractual	M
420	Asistent personal	Personal contractual	M
421	Asistent personal	Personal contractual	M
422	Asistent personal	Personal contractual	M
423	Asistent personal	Personal contractual	M

**STAT DE FUNCTII**  
**ASISTENTI PERSONALI**

NR. CRT	Denumire compartiment si functie	categorie	Nivel studii
424	Asistent personal	Personal contractual	M
425	Asistent personal	Personal contractual	M
426	Asistent personal	Personal contractual	M
427	Asistent personal	Personal contractual	M
428	Asistent personal	Personal contractual	M
429	Asistent personal	Personal contractual	M
430	Asistent personal	Personal contractual	M
431	Asistent personal	Personal contractual	M
432	Asistent personal	Personal contractual	M
433	Asistent personal	Personal contractual	M
434	Asistent personal	Personal contractual	M
435	Asistent personal	Personal contractual	M
436	Asistent personal	Personal contractual	M
437	Asistent personal	Personal contractual	M
438	Asistent personal	Personal contractual	M
439	Asistent personal	Personal contractual	M
440	Asistent personal	Personal contractual	M
441	Asistent personal	Personal contractual	M
442	Asistent personal	Personal contractual	M
443	Asistent personal	Personal contractual	M
444	Asistent personal	Personal contractual	M
445	Asistent personal	Personal contractual	M
446	Asistent personal	Personal contractual	M
447	Asistent personal	Personal contractual	M
448	Asistent personal	Personal contractual	M
449	Asistent personal	Personal contractual	M
450	Asistent personal	Personal contractual	M
451	Asistent personal	Personal contractual	M
452	Asistent personal	Personal contractual	M
453	Asistent personal	Personal contractual	M
454	Asistent personal	Personal contractual	M
455	Asistent personal	Personal contractual	M
456	Asistent personal	Personal contractual	M
457	Asistent personal	Personal contractual	M
458	Asistent personal	Personal contractual	M
459	Asistent personal	Personal contractual	M
460	Asistent personal	Personal contractual	M
461	Asistent personal	Personal contractual	M
462	Asistent personal	Personal contractual	M
463	Asistent personal	Personal contractual	M
464	Asistent personal	Personal contractual	M
465	Asistent personal	Personal contractual	M
466	Asistent personal	Personal contractual	M
467	Asistent personal	Personal contractual	M
468	Asistent personal	Personal contractual	M
469	Asistent personal	Personal contractual	M
470	Asistent personal	Personal contractual	M

**STAT DE FUNCTII**  
**ASISTENTI PERSONALI**

NR. CRT	Denumire compartiment si functie	categorie	Nivel studii
471	Asistent personal	Personal contractual	M
472	Asistent personal	Personal contractual	M
473	Asistent personal	Personal contractual	M
474	Asistent personal	Personal contractual	M
475	Asistent personal	Personal contractual	M
476	Asistent personal	Personal contractual	M
477	Asistent personal	Personal contractual	M
478	Asistent personal	Personal contractual	M
479	Asistent personal	Personal contractual	M
480	Asistent personal	Personal contractual	M
481	Asistent personal	Personal contractual	M
482	Asistent personal	Personal contractual	M
483	Asistent personal	Personal contractual	M
484	Asistent personal	Personal contractual	M
485	Asistent personal	Personal contractual	M
486	Asistent personal	Personal contractual	M
487	Asistent personal	Personal contractual	M
488	Asistent personal	Personal contractual	M
489	Asistent personal	Personal contractual	M
490	Asistent personal	Personal contractual	M

DIRECTOR GENERAL  
DINU ION DAN



MINISTERUL DEZVOLTĂRII REGIONALE ȘI ADMINISTRAȚIEI PUBLICE  
**Agencia Națională a Funcționarilor Publici**

Operator de date cu caracter personal, înregistrat la Autoritatea Națională de Supraveghere a Prelucrării Datelor cu Caracter Personal sub nr. 5129.

NR 19325/2013

*Către,*

**ADMINISTRAȚIA SERVICIILOR SOCIALE COMUNITARE PLOIEȘTI,  
JUDEȚUL PRAHOVA  
DOMNULUI DIRECTOR GENERAL DINU ION DAN**

**Referitor la adresa dumneavoastră nr. 5363/2013, înregistrată la Agenția Națională a Funcționarilor Publici cu nr. 19325/2013, vă comunicăm următoarele:**

În conformitate cu dispozițiile:

- art. 26 alin. (2) lit. b) și art. 126 alin. (1) din Hotărârea Guvernului nr. 611/2008 pentru aprobarea normelor privind organizarea și dezvoltarea carierei funcționarilor publici, modificată și completată de H.G. nr. 1173/2008, vă înaintăm nominalizarea reprezentanților Agenției Naționale a Funcționarilor Publici pentru examenul/concursul de promovare în grad profesional organizat în data de **15 iulie 2013** (proba scrisă), în comisia de concurs și în comisia de soluționare a contestațiilor:

**Comisia de concurs:**

Ana Ariciu, consilier juridic, Instituția prefectului județul Prahova

**Comisia de soluționare a contestațiilor:**

Nicușor Dumitru, consilier juridic, Instituția prefectului județul Prahova

*Cu stimă,*

**Președinte – Secretar de Stat**

**Eugen COIFAN**

**DOCUMENT SEMNAT ELECTRONIC**  
conform legii 455/2001

**Secretar General  
Carmen DRĂGAN**

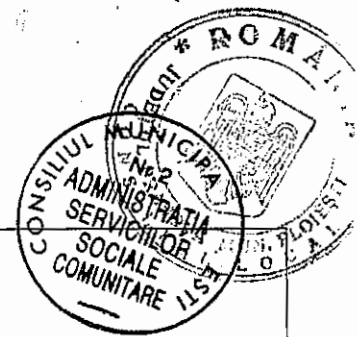
**Director General D.G.M.F.P.  
Mihaela BACIU**

Daniela Pandelaș  
Înțocmit: Iulia Popescu

Șef Serviciu Coordonare Metodologică  
-Consilier

5363/15.07.2013

## RAPORTUL FINAL AL CONCURSULUI 7)



Functia publica sau functiile publice pentru care se organizeaza concursul 8):  
**1.SERVICIUL LOCUINTE SOCIALE SI AJUTOARE INCALZIREA LOCUINTEI**  
- consilier clasa I/ grad profesional superior – 1 post

### Informatii privind selectia dosarelor

Data selectiei dosarelor : 05.07.2013

Numele si prenumele candidatului	Rezultatul selectiei dosarelor	Motivul respingerii dosarului
<b>STOICA ANDREEA MADALINA</b>	<b>ADMIS</b>	

Observatii formulate de catre membrii comisiei : ...nu este cazul.

### Informatii privind proba scrisa

Data si ora desfasurarii probei scrise : 15.07.2013 ; ora 9.00

Probleme intervenite pe durata desfasurarii probei scrise : nu este cazul

Numele si prenumele candidatului	Punctajul final al probei scrise	Rezultatul ***)
<b>STOICA ANDREEA MADALINA</b>	<b>90.66</b>	<b>ADMIS</b>

### Informatii privind interviul

Data si ora desfasurarii interviului:15.07.2013 ora 13.00

Numele si prenumele candidatului	Punctajul final al interviului	Rezultatul***)
<b>STOICA ANDREEA MADALINA</b>	<b>100.00</b>	<b>ADMIS</b>

### Rezultatul final al concursului

Numele si prenumele candidatului	Punctaj final al concursului	Rezultatul***)
<b>STOICA ANDREEA MADALINA</b>	<b>190.66</b>	<b>ADMIS</b>

Comisia de concurs:

Numele si prenumele	semnatura
<b>Chiva Daniela Simona</b>	
<b>Badulescu Ovidiu Mihai</b>	
<b>Ariciu Elena</b> ANA	

Secretarul comisiei ...Zenovia Stanescu

Semnatura.....

7) Se va completa de catre secretarul comisiei de concurs.

8) Se vor mentiona : denumirea functiei publice , gradul profesional si compartimentul din cadrul autoritatii sau institutiei publice in care este prevazut postul.

\*\*\*) Se va completa cu mentiunea « admis », respectiv « respins ».



MINISTERUL DEZVOLTĂRII REGIONALE ȘI ADMINISTRAȚIEI PUBLICE  
**Agencia Națională a Funcționarilor Publici**

Operator de date cu caracter personal, înregistrat la Autoritatea Națională de Supraveghere a Prelucrării Datelor cu Caracter Personal sub nr. 5129



Nr. 25200/2013

*Către,*

**ADMINISTRAȚIA SERVICIILOR SOCIALE COMUNITARE  
PLOIEȘTI, JUDEȚUL PRAHOVA  
DOMNULUI DIRECTOR GENERAL DINU ION DAN**

Am luat la cunoștință asupra numărului de posturi stabilit conform prevederilor Ordonanței de urgență a Guvernului nr. 77/2013 pentru stabilirea unor măsuri privind asigurarea funcționalității administrației publice locale, a numărului de posturi și reducerea cheltuielilor la instituțiile și autoritățile publice din subordinea, sub autoritatea sau în coordonarea Guvernului ori a ministerelor.

În urma analizei documentației s-a constatat că nu sunt incidente dispozițiile art. 107 alin. (1) din Legea nr. 188/1999 privind Statutul funcționarilor publici, r2, cu modificările și completările ulterioare.

*Cu stimă,*

**Președinte – Secretar de Stat**

**Eugen COIFAN**

Prenume, nume	Calitatea	Semnătura	Data
Iulia Popescu	Membru al comisiei de avizare		15.07.2013
Liliana Dumitrescu	Membru al comisiei de avizare		15.07.2013

2 exemplare

**CONSILIUL LOCAL AL MUNICIPIULUI PLOIEȘTI  
COMISIA DE SPECIALITATE NR. 1**



**COMISIA DE BUGET FINANȚE, CONTROL, ADMINISTRAREA DOMENIULUI  
PUBLIC ȘI PRIVAT, STUDII, STRATEGII ȘI PROGNOZE**

**RAPORT**

1. Comisia a luat in discutii proiectul de hotărâre privind aprobarea organigramei, a numărului de personal și a statelor de funcții ale Administrației Serviciilor Sociale Comunitare Ploiești

și a emis:

*aviz favorabil*

**PREȘEDINTE,  
Paul Alexandru Palas**

**SECRETAR,  
Sanda Dragulea**

**Data:** 24.07.2013