

ROMANIA
JUDETUL PRAHOVA
MUNICIPIUL PLOIESTI



EXPUNERE DE MOTIVE

**la proiectul privind aprobarea organigramei si a statului de functii
ale Filarmonicii „Paul Constantinescu” Ploiesti**

In vederea eficientizarii activitatii Filarmonicii „Paul Constantinescu” Ploiești propunem Consiliului Local aprobarea organigramei si a statului de funcții ale Filarmonicii „Paul Constantinescu” Ploiești, ca urmare a transformarii gradelor unor posturi vacante si preluarea postului vacant de solist concertist din cadrul orchestrei simfonice in cadrul orchestrei populare si transformarea acestuia în post de solist vocal, grad debutant.

**PRIMAR,
IULIAN BADESCU**



RAPORT DE SPECIALITATE

**la proiectul privind aprobarea organigramei și a statului de funcții
ale Filarmonicii „Paul Constantinescu” Ploiești**

În vederea aplicării cât mai corecte a legislației privind organizarea și funcționarea instituțiilor de cultură se impune reorganizarea Filarmonicii „Paul Constantinescu” Ploiești.

Modificările ce se impun la nivelul structurii instituției sunt :

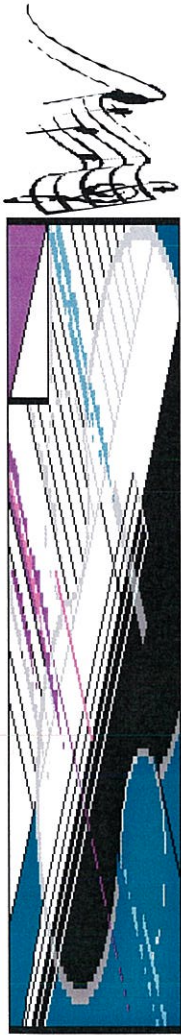
- preluarea postului vacant de solist concertist, gradul I din cadrul orchestrei simfonice în cadrul orchestrei populare și transformarea acestuia în post de solist vocal, grad debutant;
- transformarea din grad IA în grad I al postului vacant de șef partidă din cadrul orchestrei simfonice;
- transformarea din grad I în grad II a 5(cinci) posturi vacante de artist instrumentist din cadrul orchestrei simfonice;

Urmare celor mentionate mai sus, avizăm favorabil proiectul de hotarare anexat.

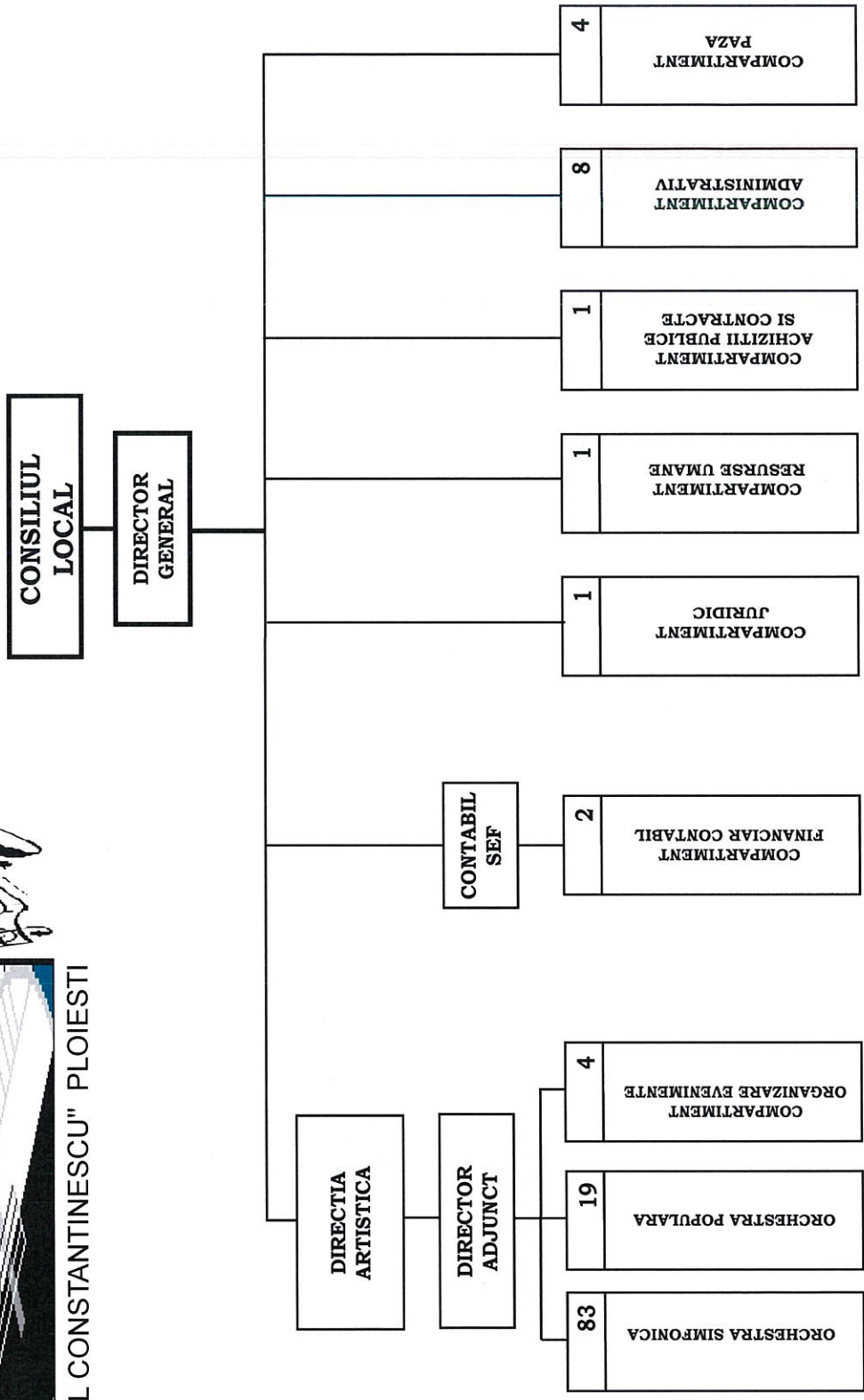
**Director general
Filarmonica “Paul Constantinescu”
Irimia Corneliu Nicolae**

**Directia Administratie Publică,
Juridic-Contencios, Contracte
Director executiv
Alexandru Iulia Alina**

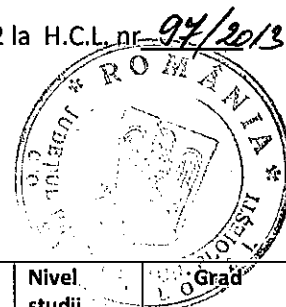
**Sef serviciu Resurse Umane , Organizare, Ad-tiv,
Protectie Civila si Protectia Muncii
Angelescu Ana Daniela**



FILARMONICA „PAUL CONSTANTINESCU” PLOIESTI

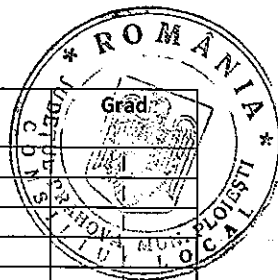


TOTAL	126
CONDUCERE	3
EXECUTIE	123



STAT DE FUNCTII

Nr. crt.	Denumirea compartimentului	Funcția	Nivel studii	Grad
DIRECTOR GENERAL				
1	Director general	Personal contractual de conducere	S	
DIRECTIA ARTISTICA				
2	Director adjunct	Personal contractual de conducere	S	
ORCHESTRA SIMFONICA				
3	Dirijor	Personal contractual de executie	S	IA
4	Dirijor	Personal contractual de executie	S	I
5	Concert maestru	Personal contractual de executie	S	IA
6	Concert maestru	Personal contractual de executie	S	IA
7	Solist concertist	Personal contractual de executie	S	IA
8	Solist concertist	Personal contractual de executie	S	II
9	Solist instrumentist	Personal contractual de executie	S	IA
10	Solist instrumentist	Personal contractual de executie	S	IA
11	Solist instrumentist	Personal contractual de executie	S	IA
12	Solist instrumentist	Personal contractual de executie	S	IA
13	Solist instrumentist	Personal contractual de executie	S	IA
14	Solist instrumentist	Personal contractual de executie	S	IA
15	Solist instrumentist	Personal contractual de executie	S	IA
16	Solist instrumentist	Personal contractual de executie	S	IA
17	Solist instrumentist	Personal contractual de executie	S	I
18	Solist instrumentist	Personal contractual de executie	S	I
19	Sef partida	Personal contractual de executie	S	IA
20	Sef partida	Personal contractual de executie	S	IA
21	Sef partida	Personal contractual de executie	S	IA
22	Sef partida	Personal contractual de executie	S	IA
23	Sef partida	Personal contractual de executie	S	I
24	Sef partida	Personal contractual de executie	S	I
25	Sef partida	Personal contractual de executie	S	I
26	Sef partida	Personal contractual de executie	S	I
27	Sef partida	Personal contractual de executie	S	I
28	Sef partida	Personal contractual de executie	S	I
29	Secretar (muzical)	Personal contractual de executie	S	I
30	Artist instrumentist	Personal contractual de executie	S	IA
31	Artist instrumentist	Personal contractual de executie	S	IA
32	Artist instrumentist	Personal contractual de executie	S	IA
33	Artist instrumentist	Personal contractual de executie	S	IA
34	Artist instrumentist	Personal contractual de executie	S	IA
35	Artist instrumentist	Personal contractual de executie	S	IA
36	Artist instrumentist	Personal contractual de executie	S	IA
37	Artist instrumentist	Personal contractual de executie	S	IA
38	Artist instrumentist	Personal contractual de executie	S	IA
39	Artist instrumentist	Personal contractual de executie	S	IA
40	Artist instrumentist	Personal contractual de executie	S	IA
41	Artist instrumentist	Personal contractual de executie	S	IA
42	Artist instrumentist	Personal contractual de executie	S	IA
43	Artist instrumentist	Personal contractual de executie	S	IA
44	Artist instrumentist	Personal contractual de executie	S	I
45	Artist instrumentist	Personal contractual de executie	S	I
46	Artist instrumentist	Personal contractual de executie	S	I
47	Artist instrumentist	Personal contractual de executie	S	I



Nr. crt.	Denumirea compartimentului	Funcția	Nivel studii	Grad
48	Artist instrumentist	Personal contractual de executie	S	
49	Artist instrumentist	Personal contractual de executie	S	
50	Artist instrumentist	Personal contractual de executie	S	
51	Artist instrumentist	Personal contractual de executie	S	
52	Artist instrumentist	Personal contractual de executie	S	
53	Artist instrumentist	Personal contractual de executie	S	I
54	Artist instrumentist	Personal contractual de executie	S	I
55	Artist instrumentist	Personal contractual de executie	S	I
56	Artist instrumentist	Personal contractual de executie	S	I
57	Artist instrumentist	Personal contractual de executie	S	I
58	Artist instrumentist	Personal contractual de executie	S	I
59	Artist instrumentist	Personal contractual de executie	S	I
60	Artist instrumentist	Personal contractual de executie	S	I
61	Artist instrumentist	Personal contractual de executie	S	I
62	Artist instrumentist	Personal contractual de executie	S	I
63	Artist instrumentist	Personal contractual de executie	S	I
64	Artist instrumentist	Personal contractual de executie	S	I
65	Artist instrumentist	Personal contractual de executie	S	I
66	Artist instrumentist	Personal contractual de executie	S	I
67	Artist instrumentist	Personal contractual de executie	S	I
68	Artist instrumentist	Personal contractual de executie	S	II
69	Artist instrumentist	Personal contractual de executie	S	II
70	Artist instrumentist	Personal contractual de executie	S	II
71	Artist instrumentist	Personal contractual de executie	S	II
72	Artist instrumentist	Personal contractual de executie	S	II
73	Artist instrumentist	Personal contractual de executie	S	II
74	Artist instrumentist	Personal contractual de executie	S	II
75	Artist instrumentist	Personal contractual de executie	S	II
76	Artist instrumentist	Personal contractual de executie	S	II
77	Artist instrumentist	Personal contractual de executie	S	II
78	Artist instrumentist	Personal contractual de executie	S	II
79	Artist instrumentist	Personal contractual de executie	S	II
80	Artist instrumentist	Personal contractual de executie	S	II
81	Artist instrumentist	Personal contractual de executie	S	II
82	Artist instrumentist	Personal contractual de executie	S	II
83	Instrumentist	Personal contractual de executie	M	I
84	Instrumentist	Personal contractual de executie	M	I
85	Instrumentist	Personal contractual de executie	M	I
ORCHESTRA POPULARA				
86	Dirijor	Personal contractual de executie	S	I
87	Solist vocal	Personal contractual de executie	S	II
88	Solist vocal	Personal contractual de executie	S	II
89	Solist vocal	Personal contractual de executie	S	II
90	Solist vocal	Personal contractual de executie	S	debutant
91	Solist vocal	Personal contractual de executie	M	III
92	Artist instrumentist	Personal contractual de executie	S	IA
93	Artist instrumentist	Personal contractual de executie	S	I
94	Artist instrumentist	Personal contractual de executie	S	II
95	Instrumentist	Personal contractual de executie	M	I
96	Instrumentist	Personal contractual de executie	M	I
97	Instrumentist	Personal contractual de executie	M	I
98	Instrumentist	Personal contractual de executie	M	I
99	Instrumentist	Personal contractual de executie	M	I
100	Instrumentist	Personal contractual de executie	M	I
101	Instrumentist	Personal contractual de executie	M	I
102	Instrumentist	Personal contractual de executie	M	II
103	Instrumentist	Personal contractual de executie	M	II
104	Instrumentist	Personal contractual de executie	M	III

Nr. crt.	Denumirea compartimentului	Funcția	Nivel Studii	Grād
ORGANIZARE EVENIMENTE				
105	Impresar artistic	Personal contractual de executie	S	I
106	Bibliotecar	Personal contractual de executie	S	IA
107	Referent de specialitate	Personal contractual de executie	S	IA
108	Referent de specialitate	Personal contractual de executie	S	IA
CONTABIL SEF				
109	Contabil sef	Personal contractual de conducere	S	
COMPARTIMENT FINANCIAR CONTABIL				
110	Referent de specialitate	Personal contractual de executie	S	I
111	Referent de specialitate	Personal contractual de executie	S	II
COMPARTIMENT JURIDIC				
112	Consilier juridic	Personal contractual de executie	S	IA
COMPARTIMENT RESURSE UMANE				
113	Referent	Personal contractual de executie	M	I
COMPARTIMENT ACHIZITII PUBLICE SI CONTRACTE				
114	Referent de specialitate	Personal contractual de executie	S	I
COMPARTIMENT ADMINISTRATIV				
115	Referent de specialitate	Personal contractual de executie	S	I
116	Garderobier	Personal contractual de executie	M	
117	Garderobier	Personal contractual de executie	M	
118	Garderobier	Personal contractual de executie	M	
119	Recuziter	Personal contractual de executie		I
120	Recuziter	Personal contractual de executie		I
121	Recuziter	Personal contractual de executie		I
122	Muncitor (electroacustician)	Personal contractual de executie		I
COMPARTIMENT PAZA				
123	Paznic	Personal contractual de executie	M	
124	Paznic	Personal contractual de executie	M	
125	Paznic	Personal contractual de executie	M	
126	Paznic	Personal contractual de executie	M	

**CONSILIUL LOCAL AL MUNICIPIULUI PLOIEȘTI
COMISIA DE SPECIALITATE NR. 1**



**COMISIA DE BUGET FINANȚE, CONTROL, ADMINISTRAREA DOMENIULUI
PUBLIC ȘI PRIVAT, STUDII, STRATEGII ȘI PROGNOZE**

RAPORT

Comisia a luat in discutii proiectul de hotărâre privind aprobarea organigramei și a statului de funcții ale Filarmonicii "Paul Constantinescu" Ploiești

și a emis:

aviz favorabil

**PREȘEDINTE,
Paul Palaș**

**SECRETAR,
Cristian Ganea**

Data: 29. 03. 2017